

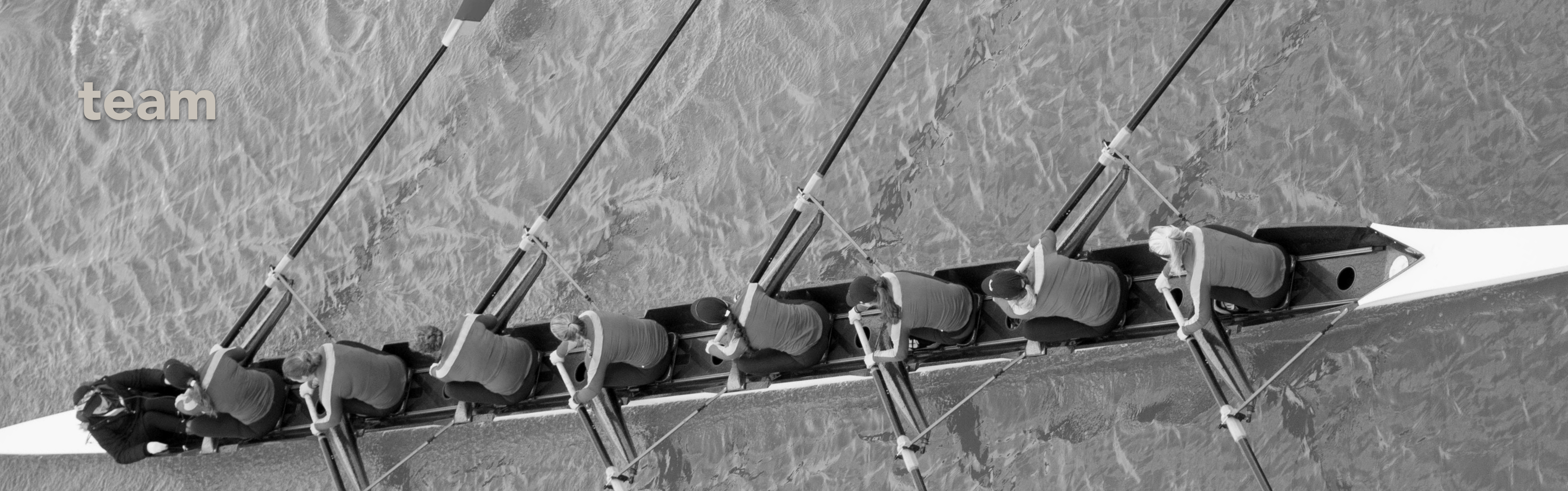


Montebello General Plan Montebello Downtown Plan

Joint Mtg. 10-6-20



team



Rangwala Associates

MOULE & POLYZOIDES
ARCHITECTS AND URBANISTS

K KITTELSON
& ASSOCIATES

illuminas
Consulting

rincon
Rincon Consultants, Inc.

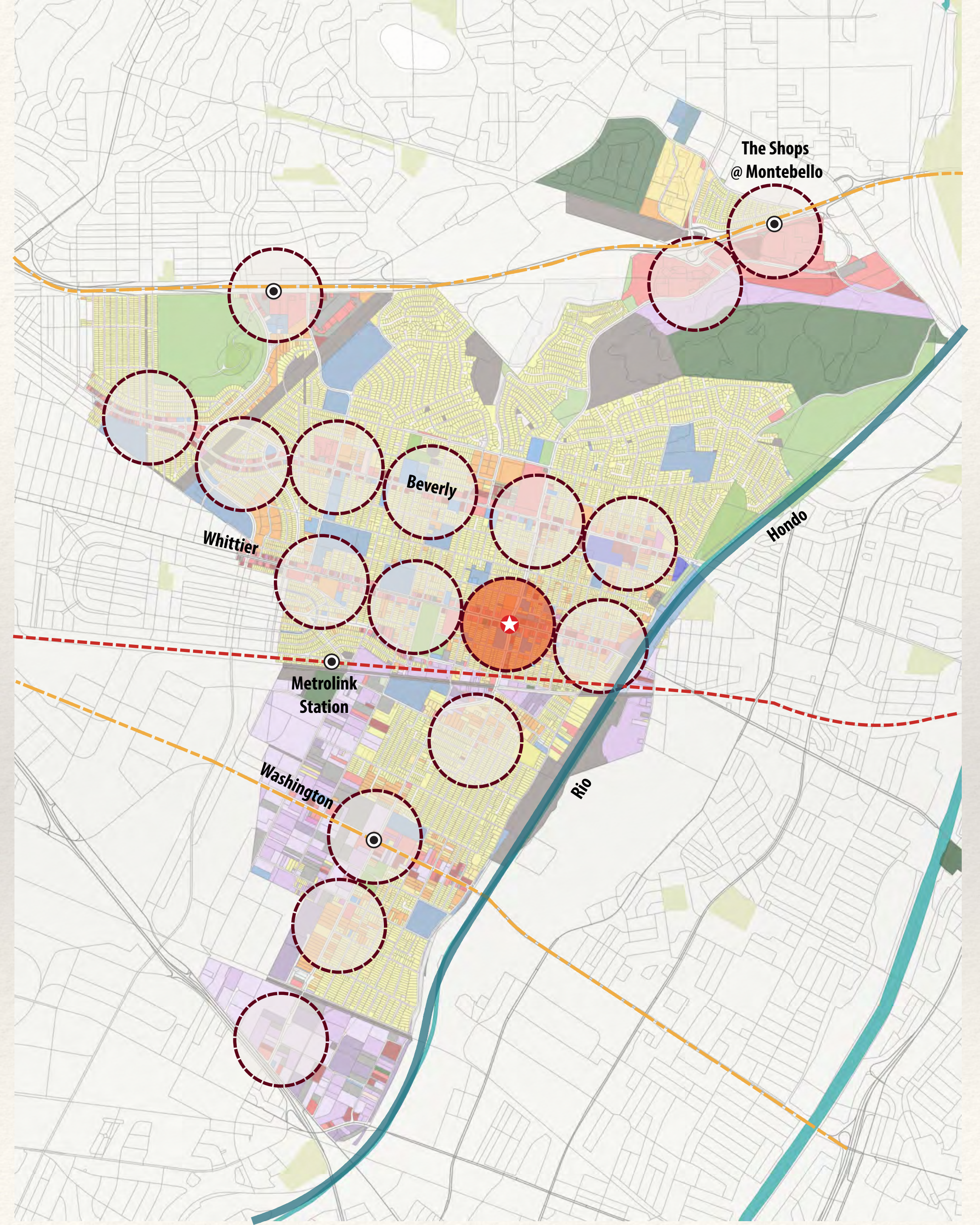
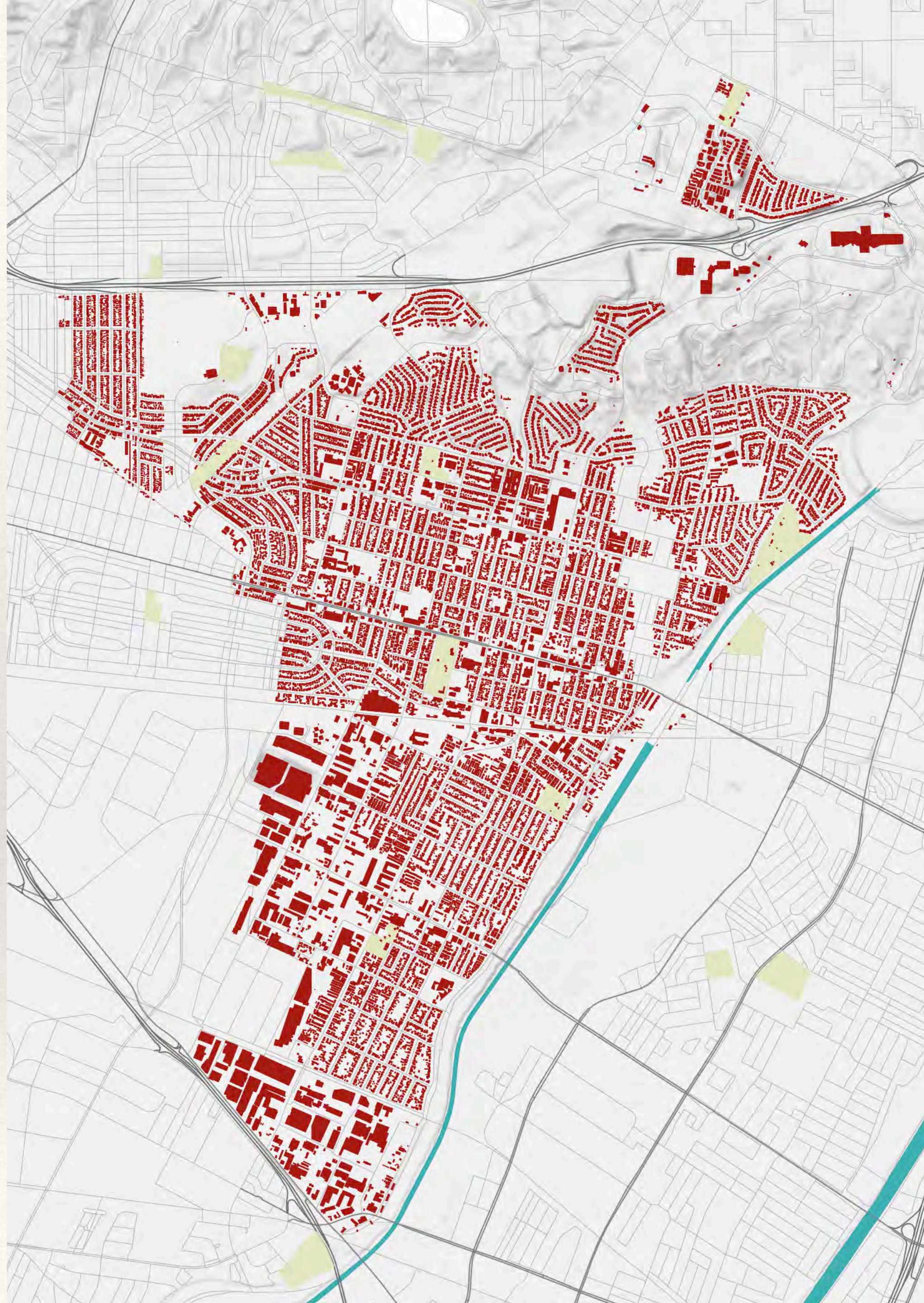
FUSCOE
ENGINEERING

Fong Hart Schneider
+
Partners

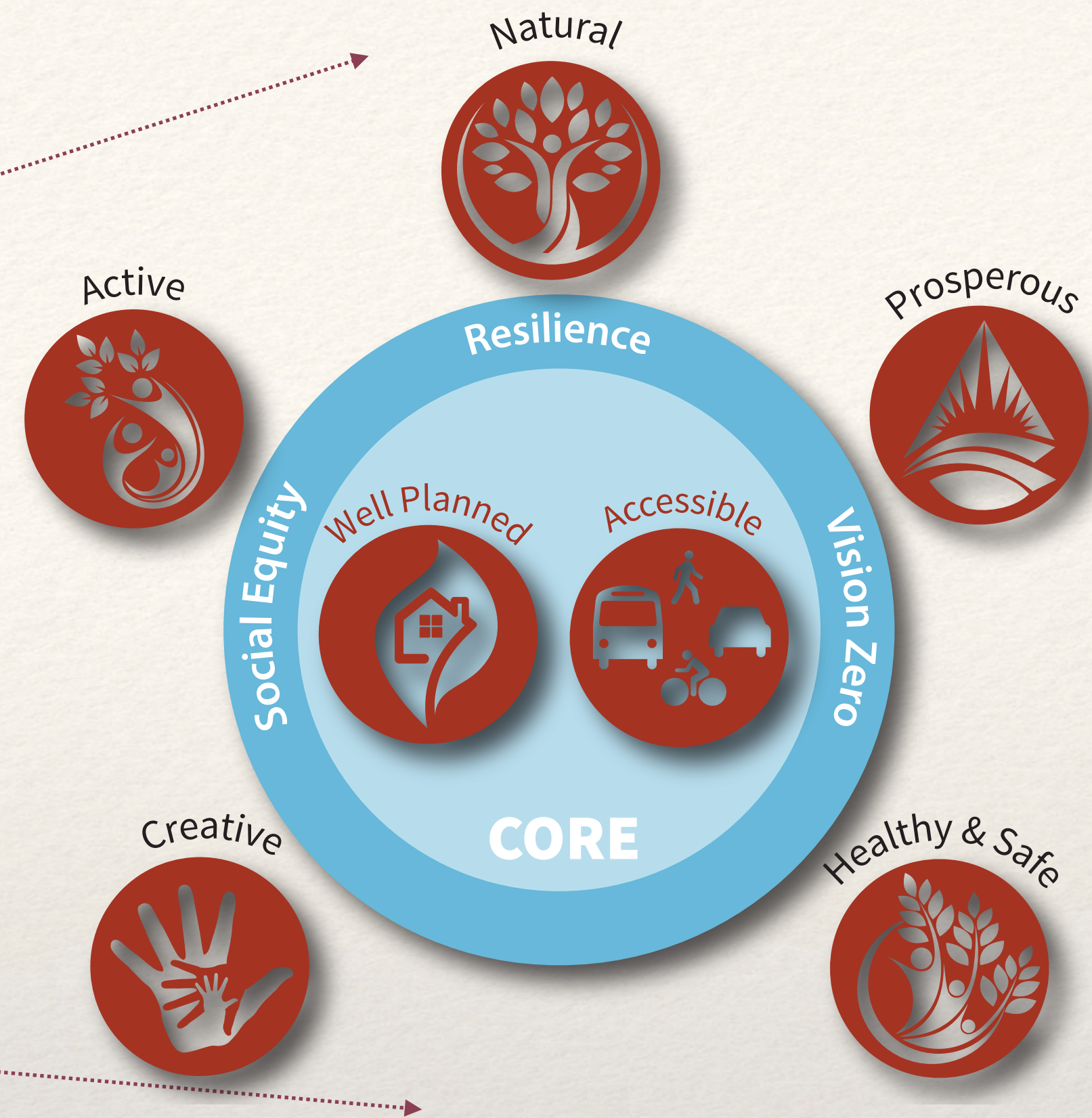


MetroQuest
Public Involvement Software

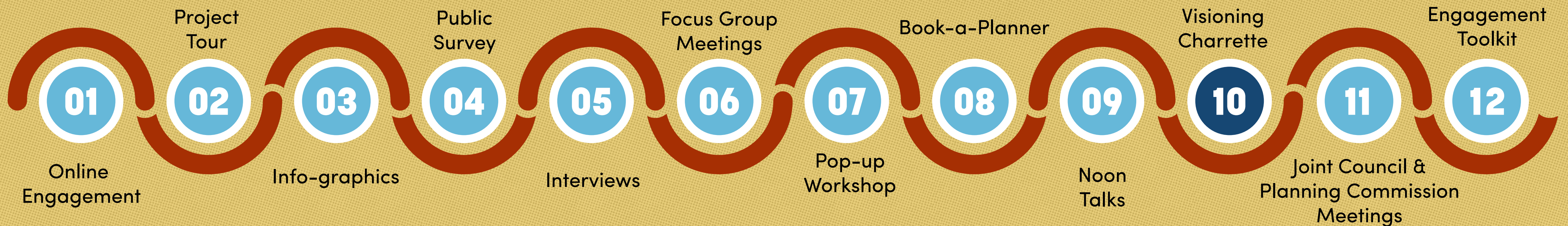
EA·A



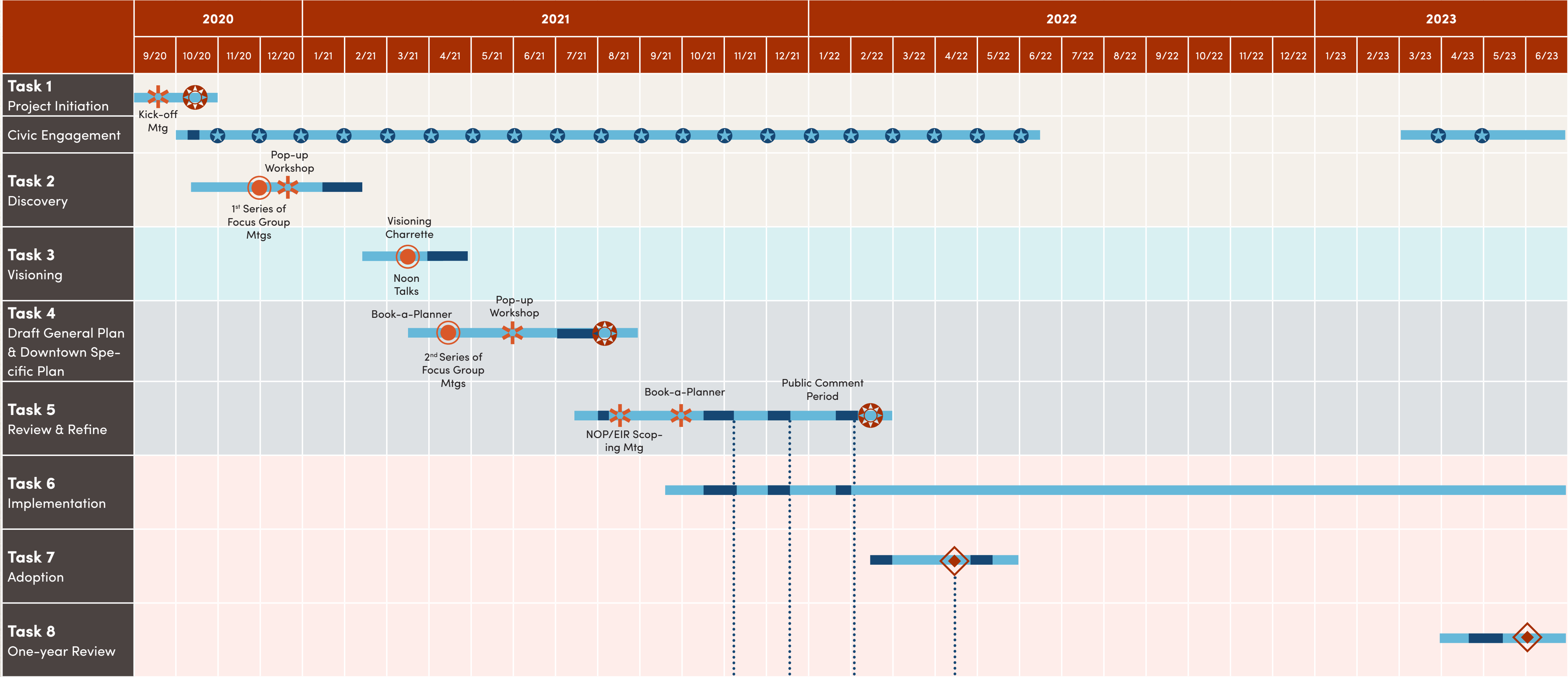
organization



Civic Engagement Strategies

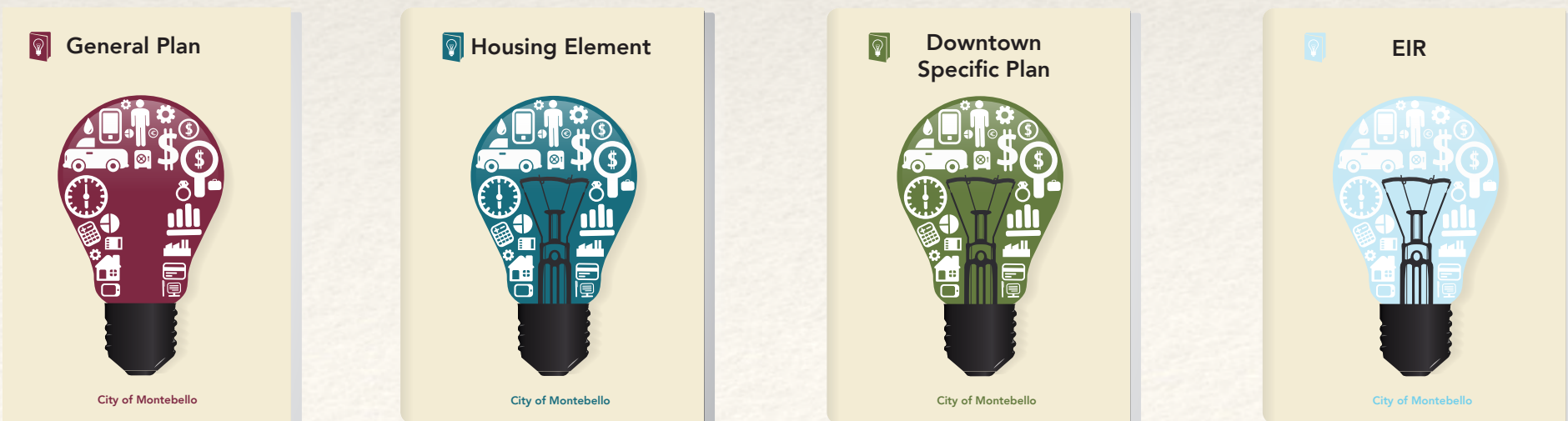


Project Schedule



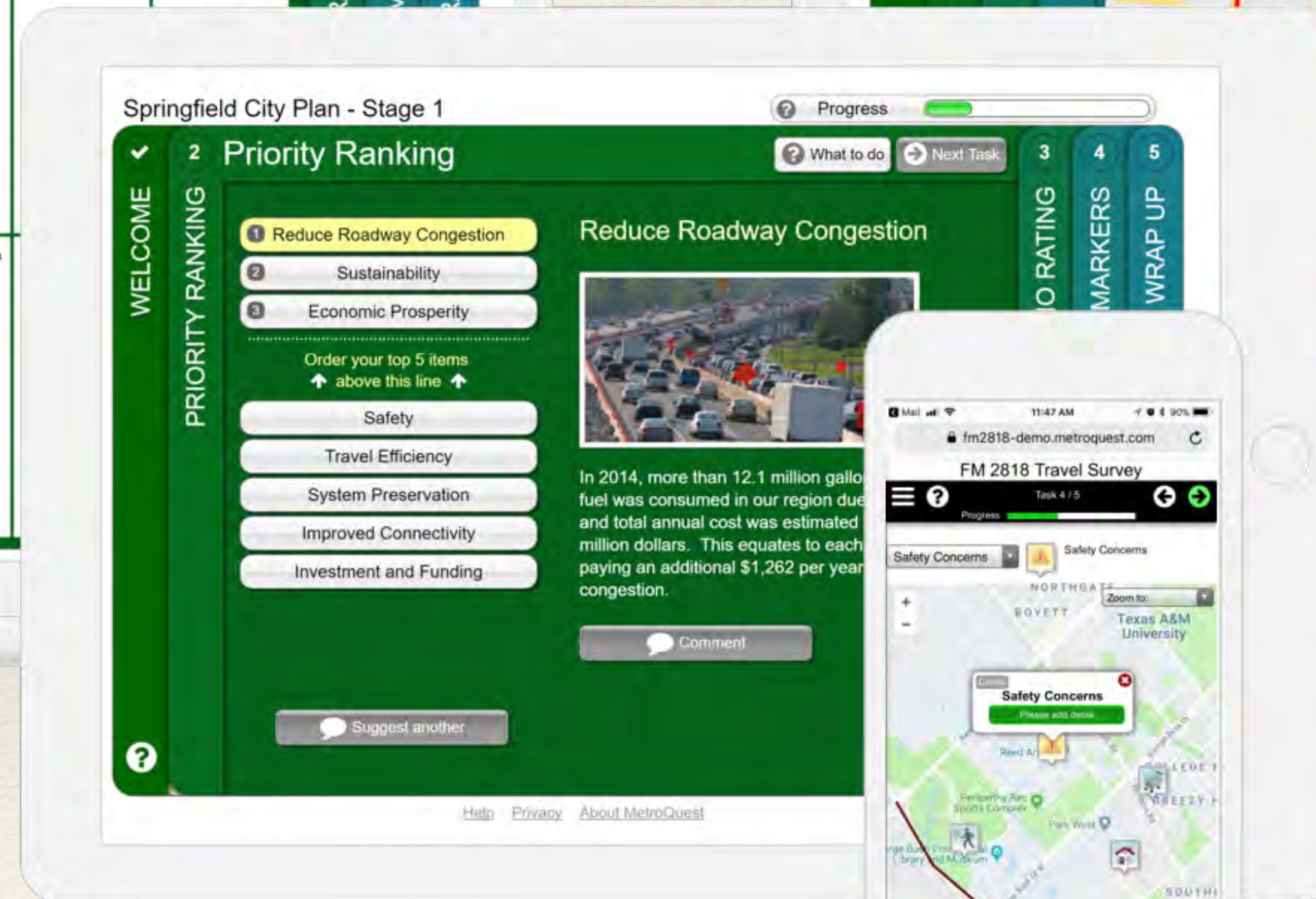
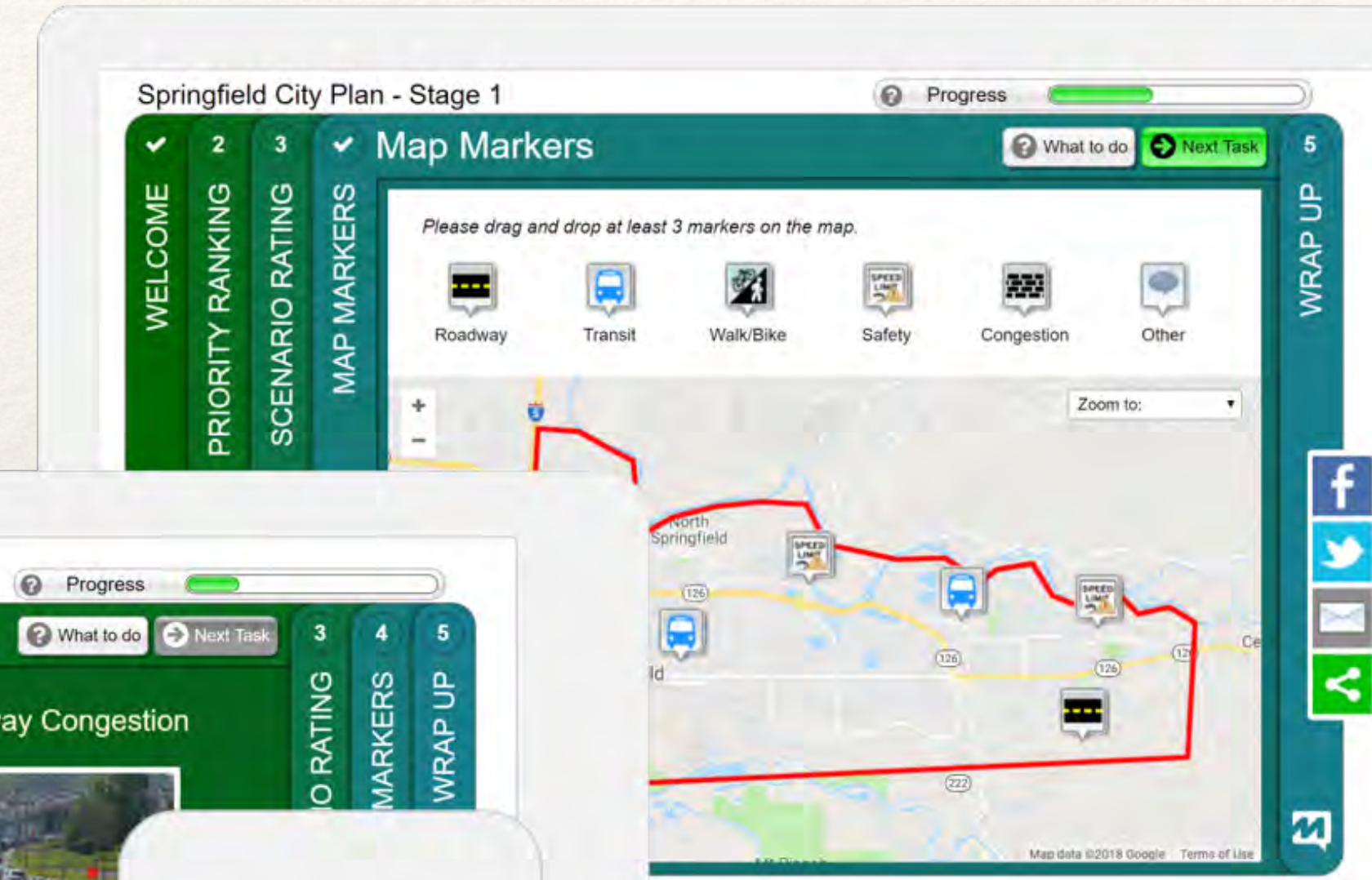
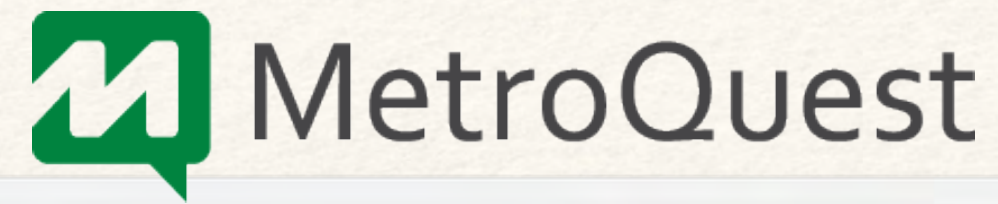
- Joint City Council & Planning Commission Meeting
- Adoption Hearings
- Focus Group Mtgs/ Visioning Charrette
- Monthly Progress Mtg
- Other Mtgs
- Tasks
- City Review

1st Draft Admin Draft Final Draft



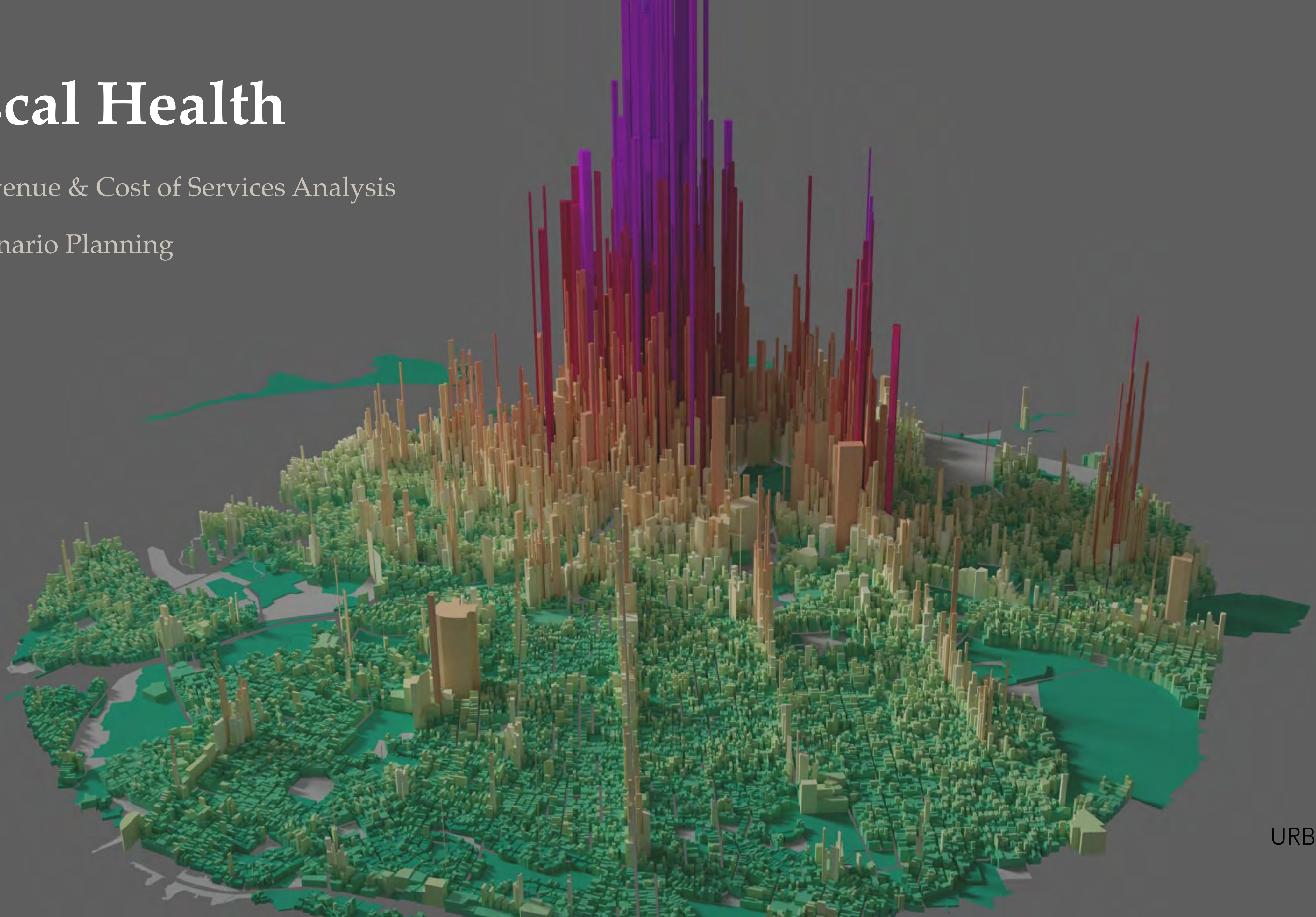
Engagement

1. Increase Participation
2. Broader Demographic
3. Inform & Educate
4. Quantify Input

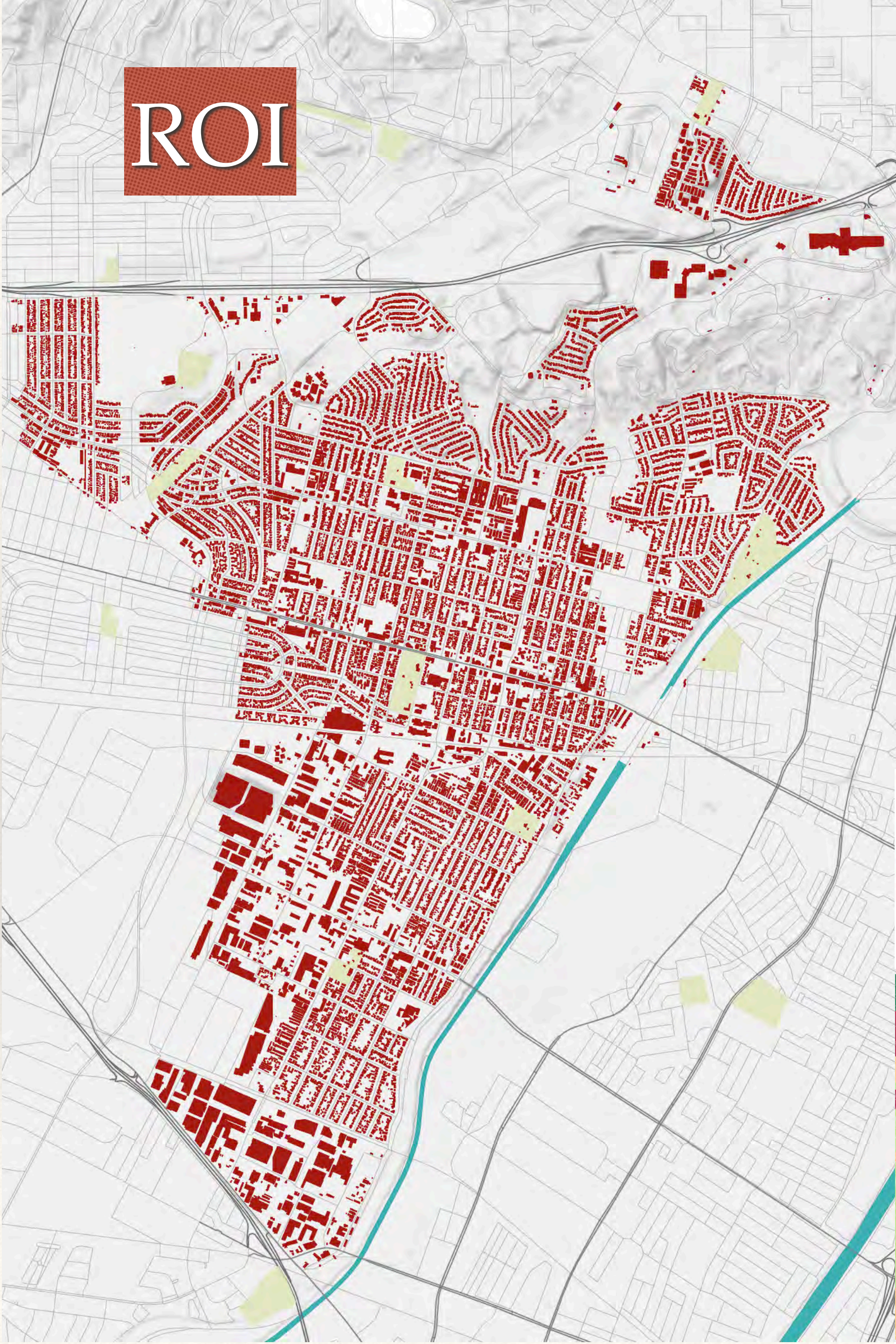


Fiscal Health

- Revenue & Cost of Services Analysis
- Scenario Planning



ROI



Parks *Montebello*
1.31
acres per 1,000 people

LA County
8.10
acres per 1,000 people

Health *Obese*
27%
Diabetes
10%

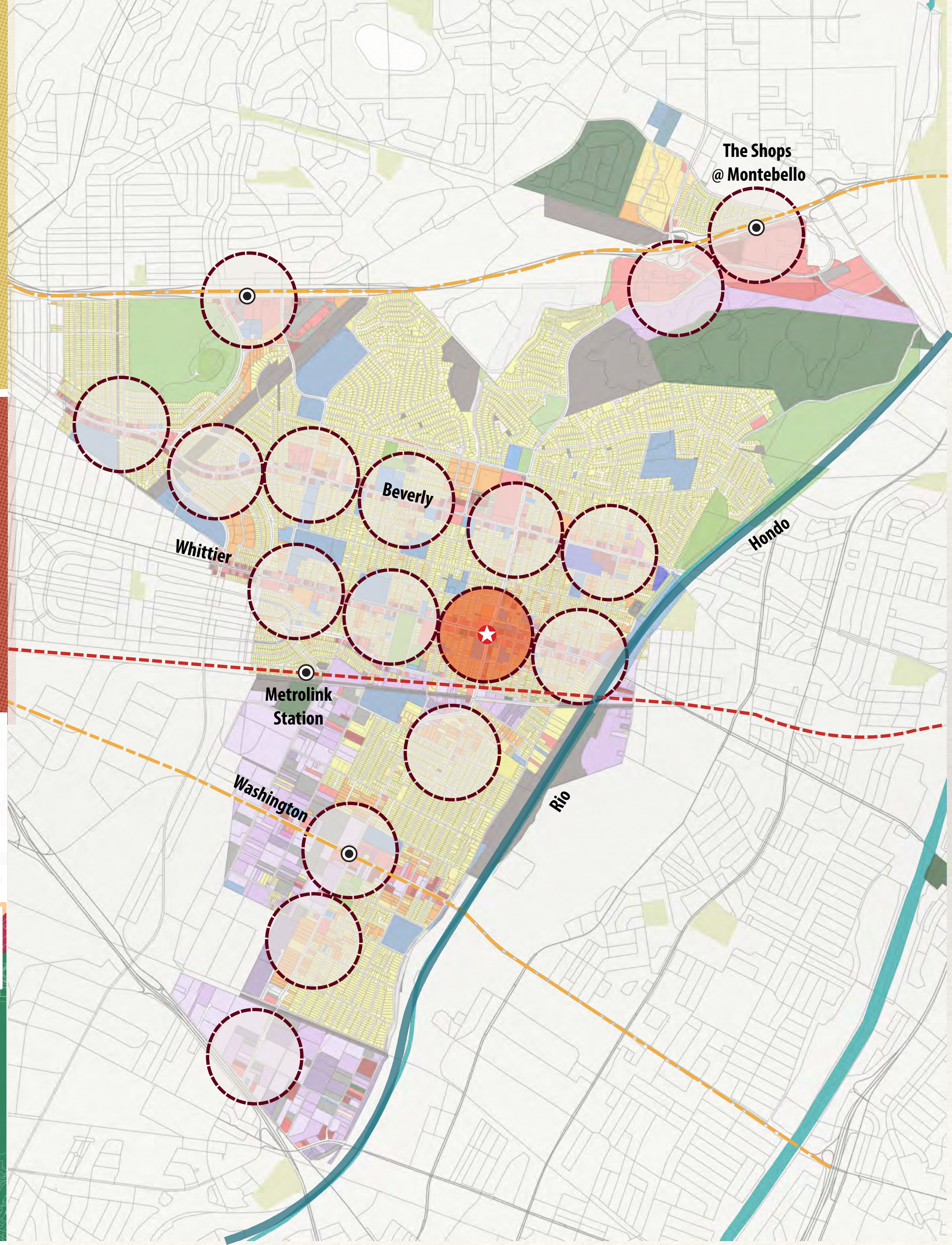
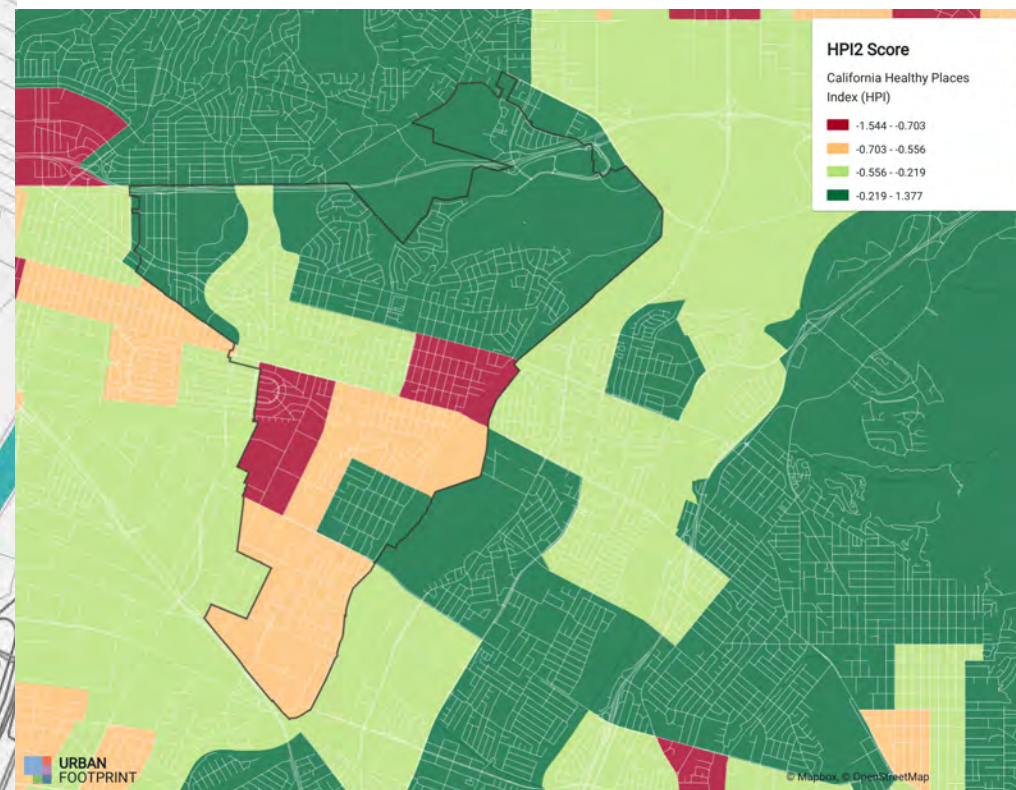
CALIFORNIA HEALTHY PLACES INDEX SCORE

0 TO 25 TH PERCENTILE	26 TH TO 50 TH PERCENTILE	51 TH TO 75 TH PERCENTILE	76 TH TO 100 TH PERCENTILE
----------------------------------	---	---	--

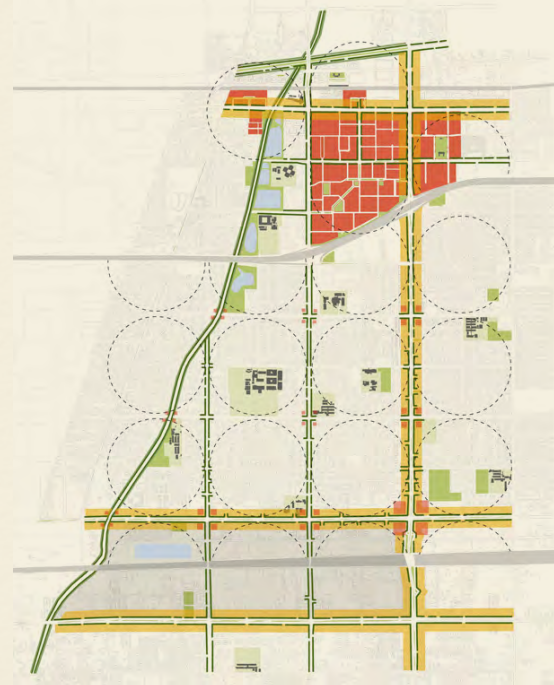
Fewer healthy community conditions More healthy community conditions

MONTEBELLO: 26TH percentile

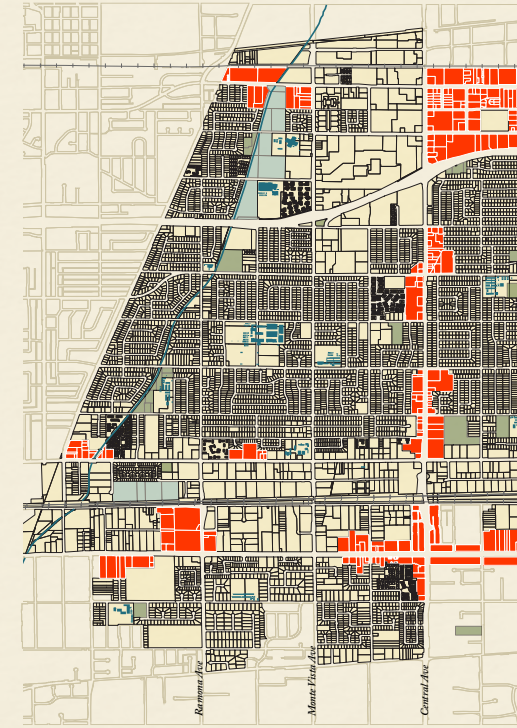
Public Health Alliance of Southern California, California Healthy Places Index, 2018



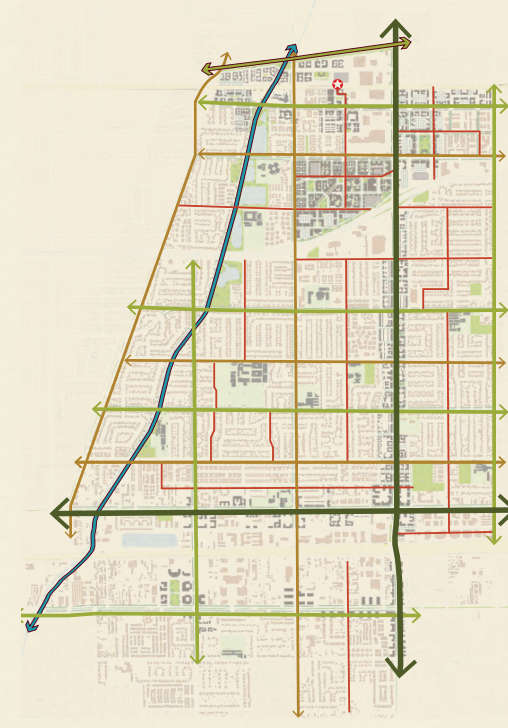
Vision



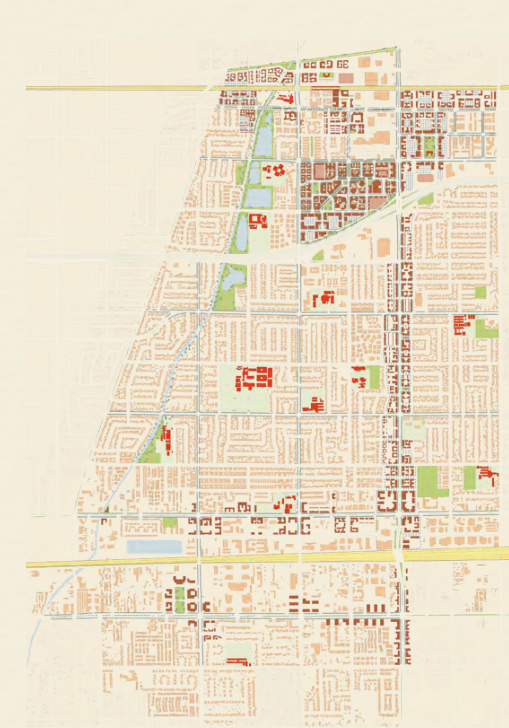
Urban Form: Neighborhoods, Centers, Corridors, & Districts



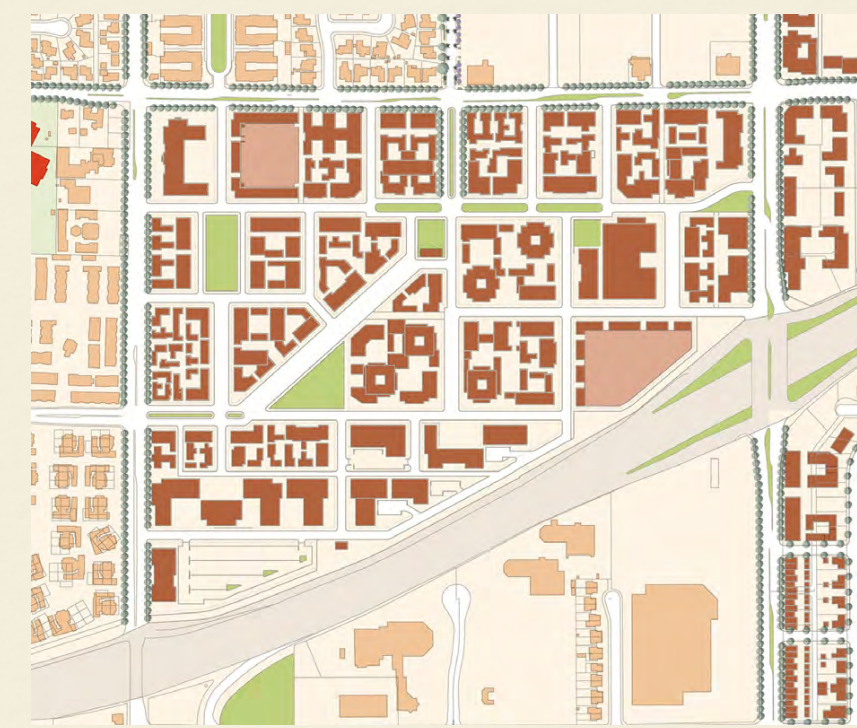
Catalytic sites



Green Infrastructure



Citywide Master Plan

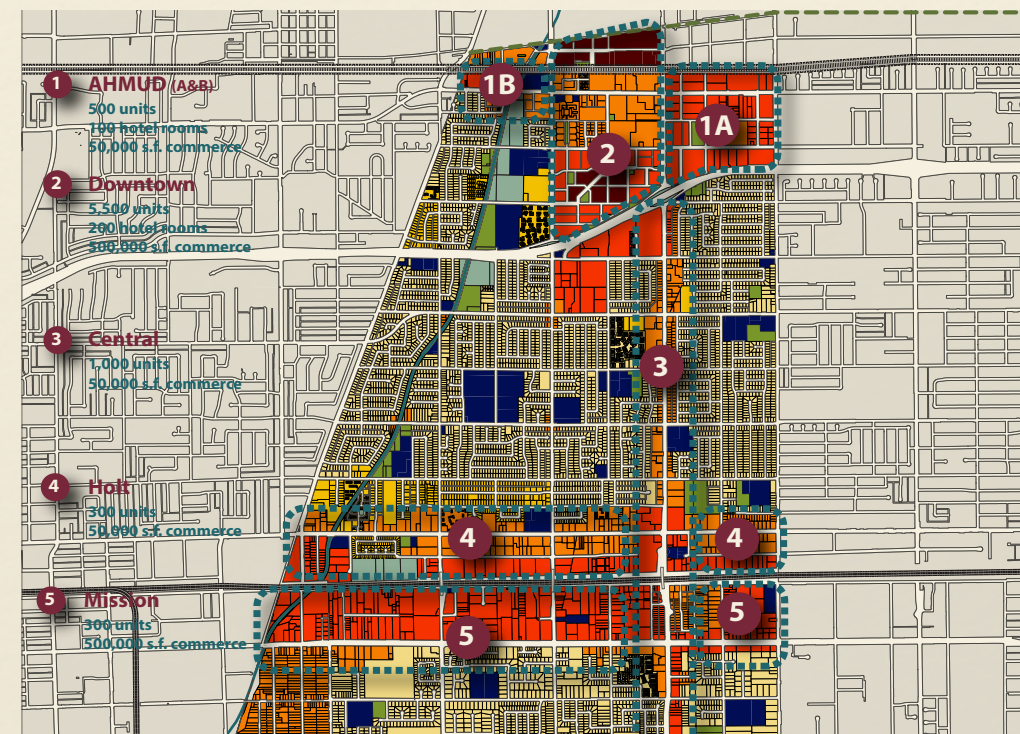


Downtown Master Plan

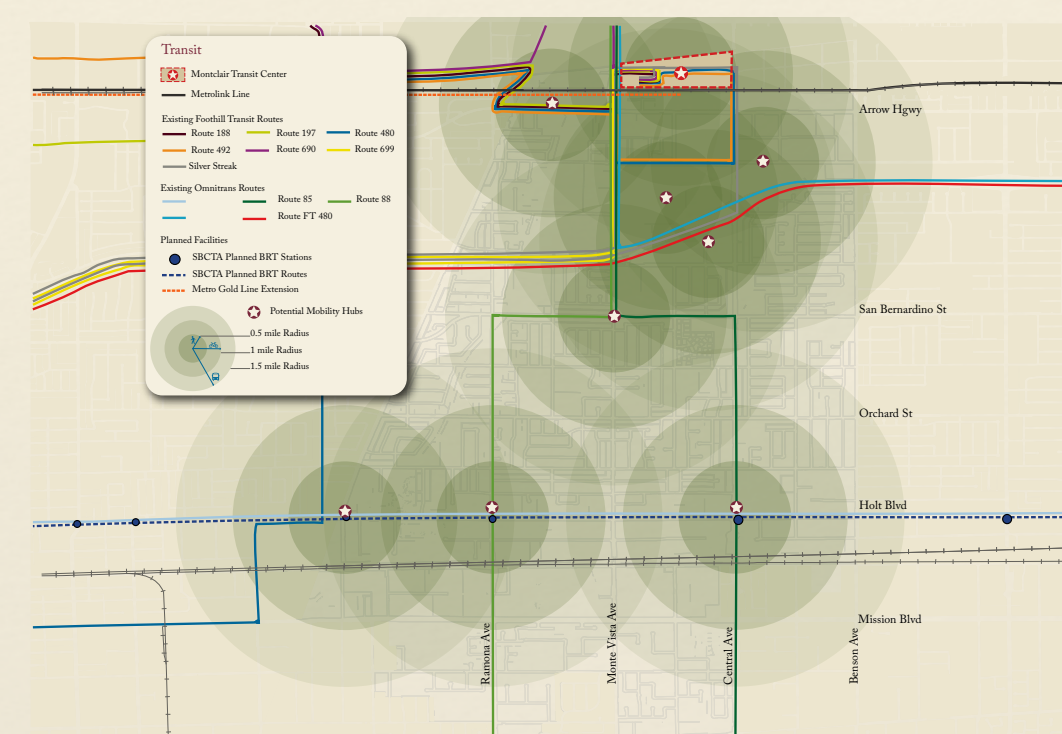


Aerial Illustration of Downtown Corridor

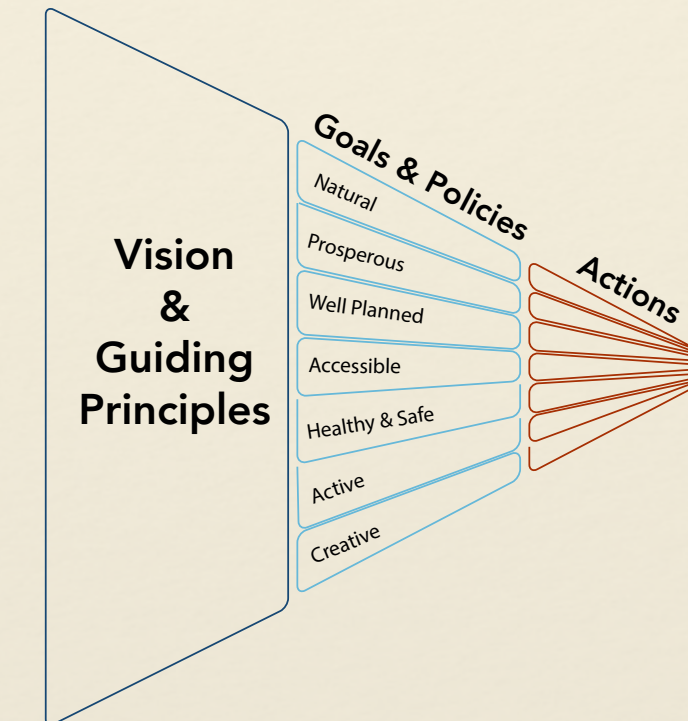
Policy



Proposed Land Use Map with Growth Projection & Locations



Mobility Hubs

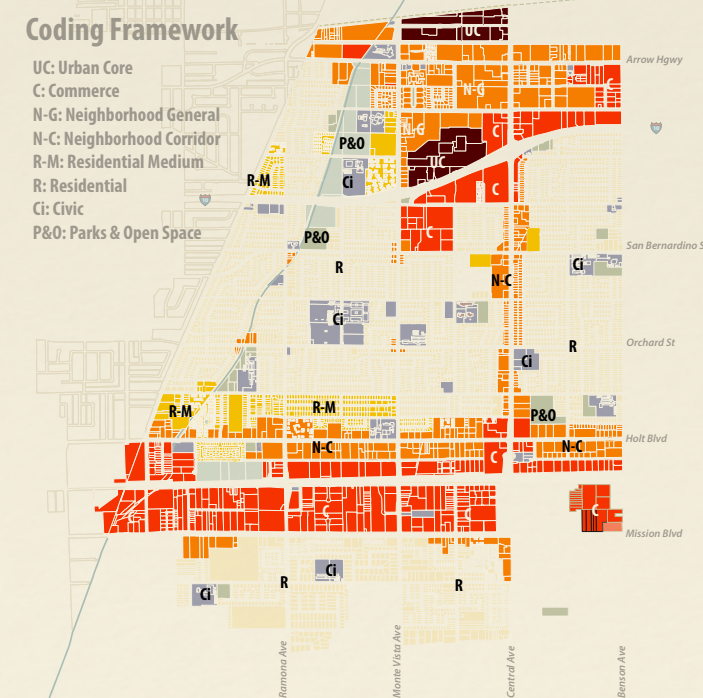


Vision-based Policies & Actions

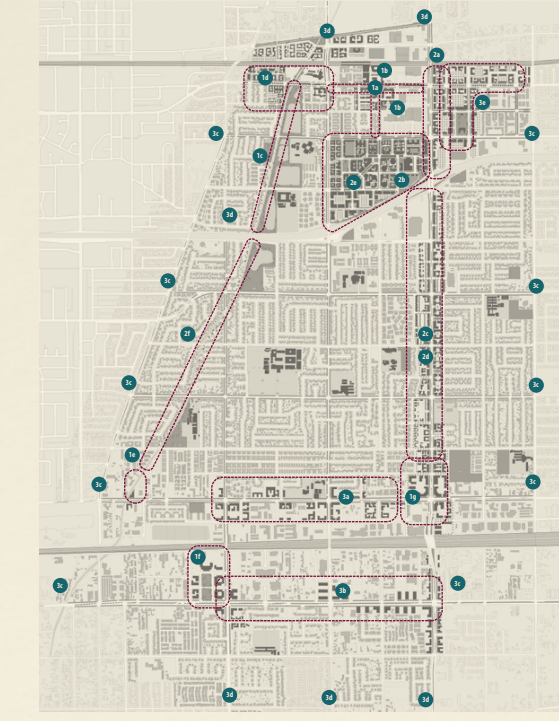
The term vision refers to:

- An economic development strategy for the city;
- Support from the broadest possible array of people;
- Physical & integrative plan:
 - Physical in the sense of being visible & describable; and
 - Integrative in the sense that it should include all dimensions of operating a city, including fiscal health, safety, place-making, infrastructure, public health, equity, etc.

Implementation



Place-based Coding Framework



Phased & Coordinated Public-Private Implementation



Vision Based Performance Metrics

METRICS



next steps

- **Interviews (TBD)**
- **Survey**
- **Focus Group Meeting**
 - **Our Prosperous Community (January 12, 2021)**
 - **Our Natural, Healthy, & Safe Community (January 20,2021)**
- **Visioning Charrette (TBD)**

www.planmontebello.com