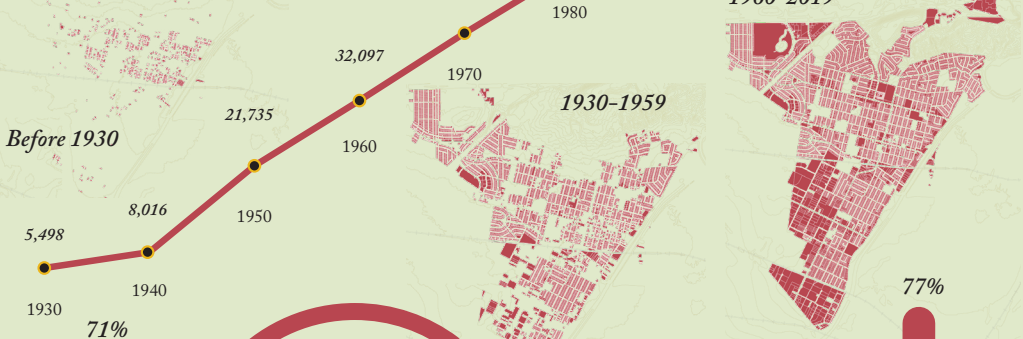
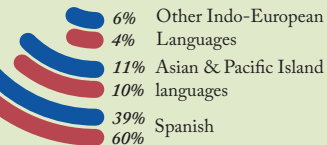


Montebello

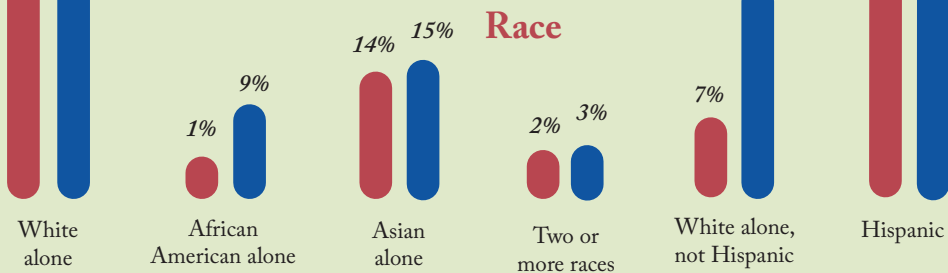
People



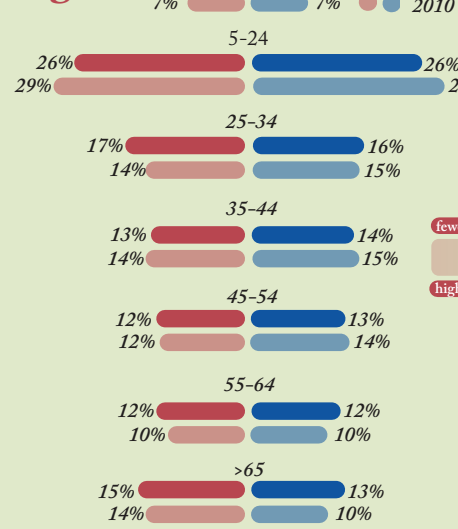
Languages



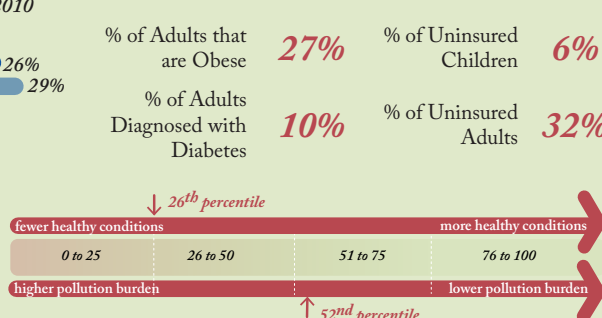
Race



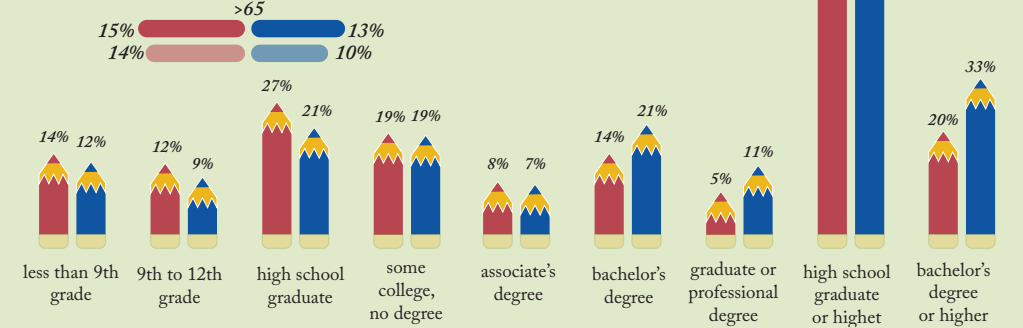
Age



Health



Education



Population
61,954



Median Household Income
\$56,150



Poverty Rate
13.9%



Bachelor's Degree or Higher
19.8%



Employment
25,600



Total Housing Units
19,919



Average household size

Montebello	Los Angeles County	State of California
3.30	2.99	2.95



Median home value

Montebello	Los Angeles County	State of California
\$492,300	\$583,200	\$505,000

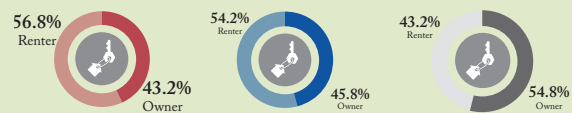


Median household income

Montebello	Los Angeles County	State of California
\$56,150	\$68,044	\$75,235



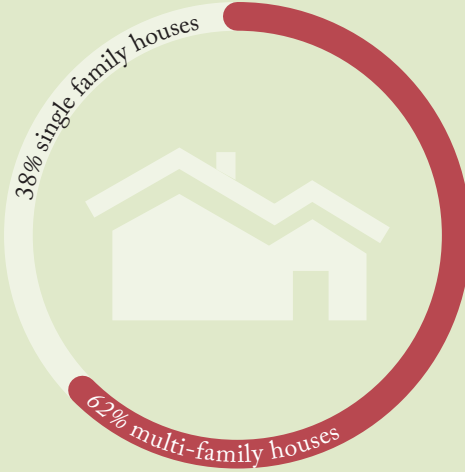
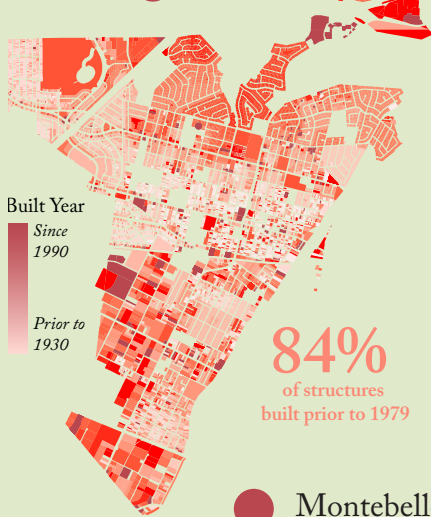
Housing tenure



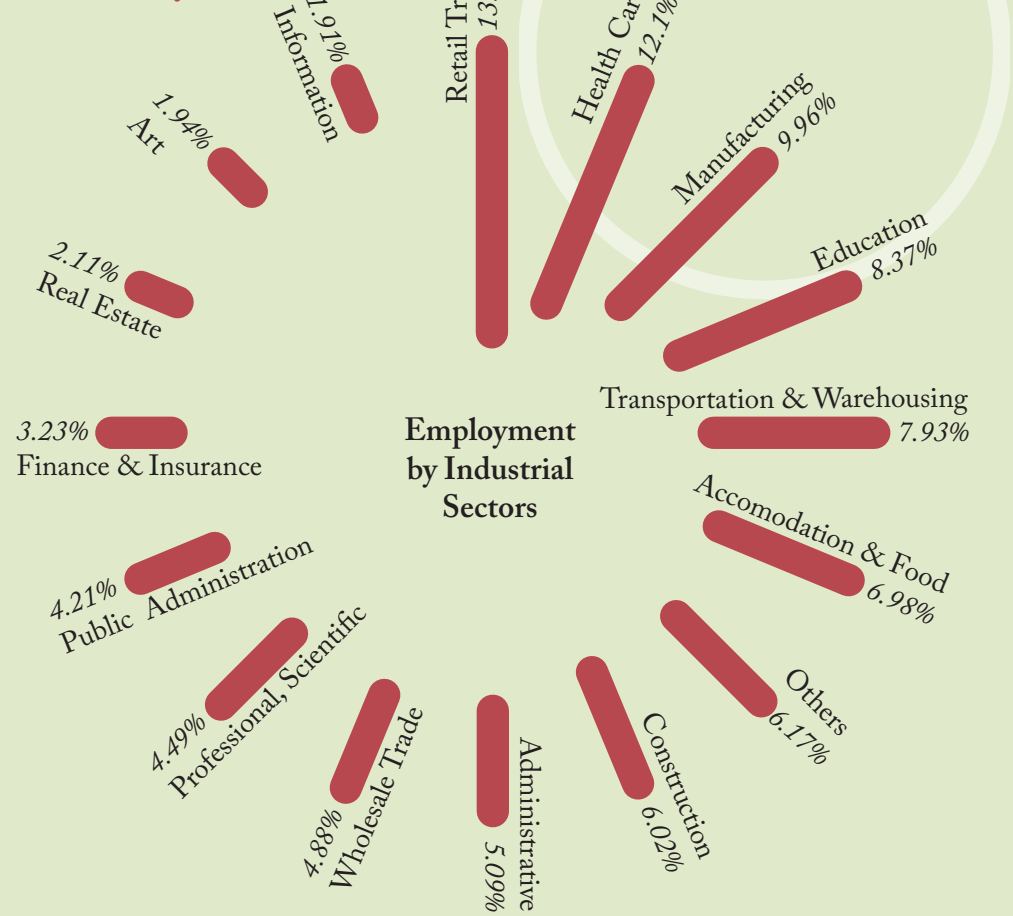
Average commute time



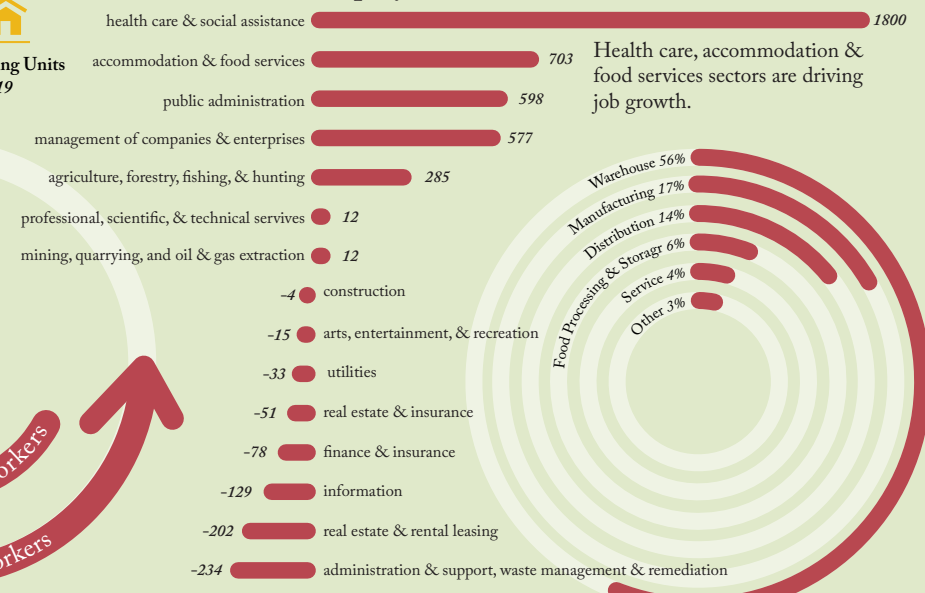
Housing



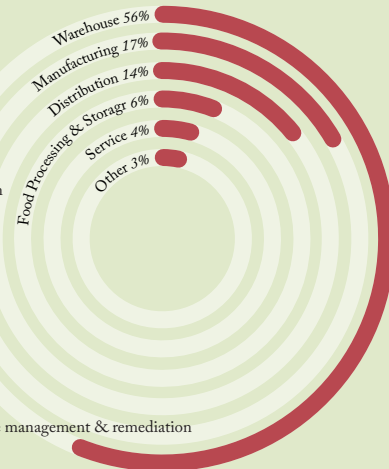
Economy



Employment Trend (2008-2018)



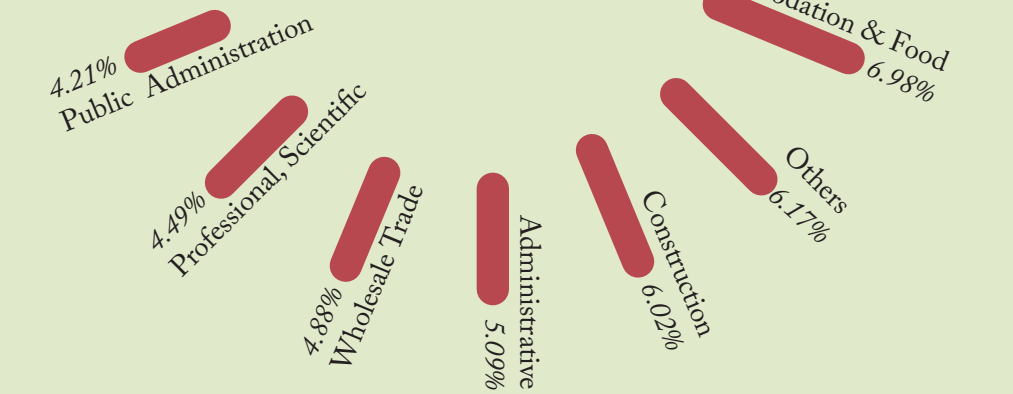
Industrial Use Distribution



Unemployment Rate



Employment by Industrial Sectors



Commuter Inflow/Outflow



Most Montebello residents work outside of the City.

Sources: US Census, LEHD, American Community Survey, CoStar, California Economic Development Department, LA County Department of Public Health

Montebello

Los Angeles County

Income

