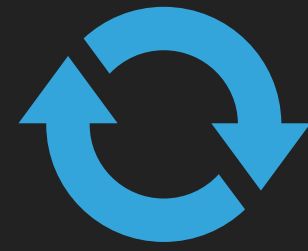


Montebello



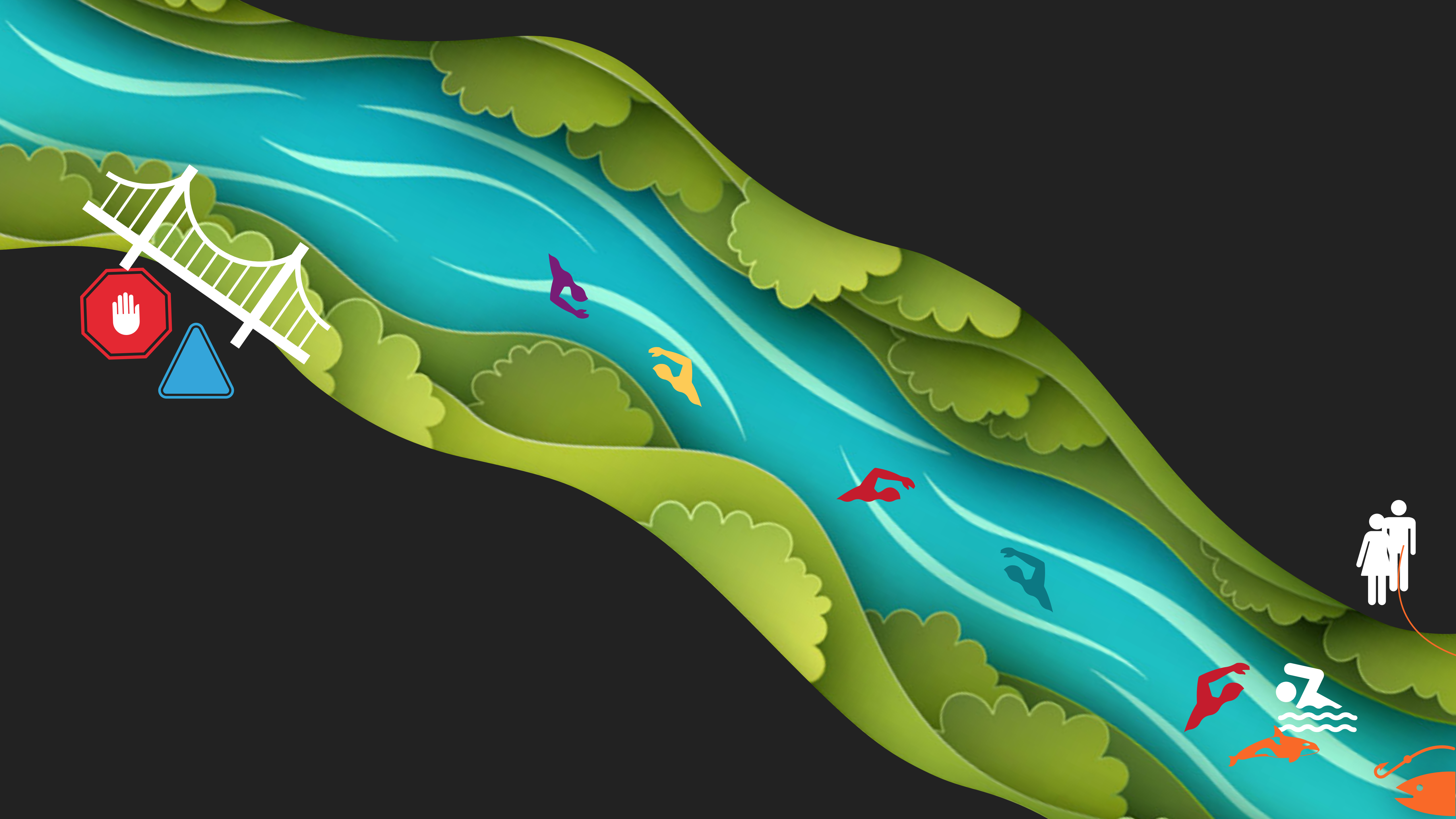
Our Healthy & Safe Community

1-20-22 Focus Group Meeting, 6:00 pm



Health & Safety





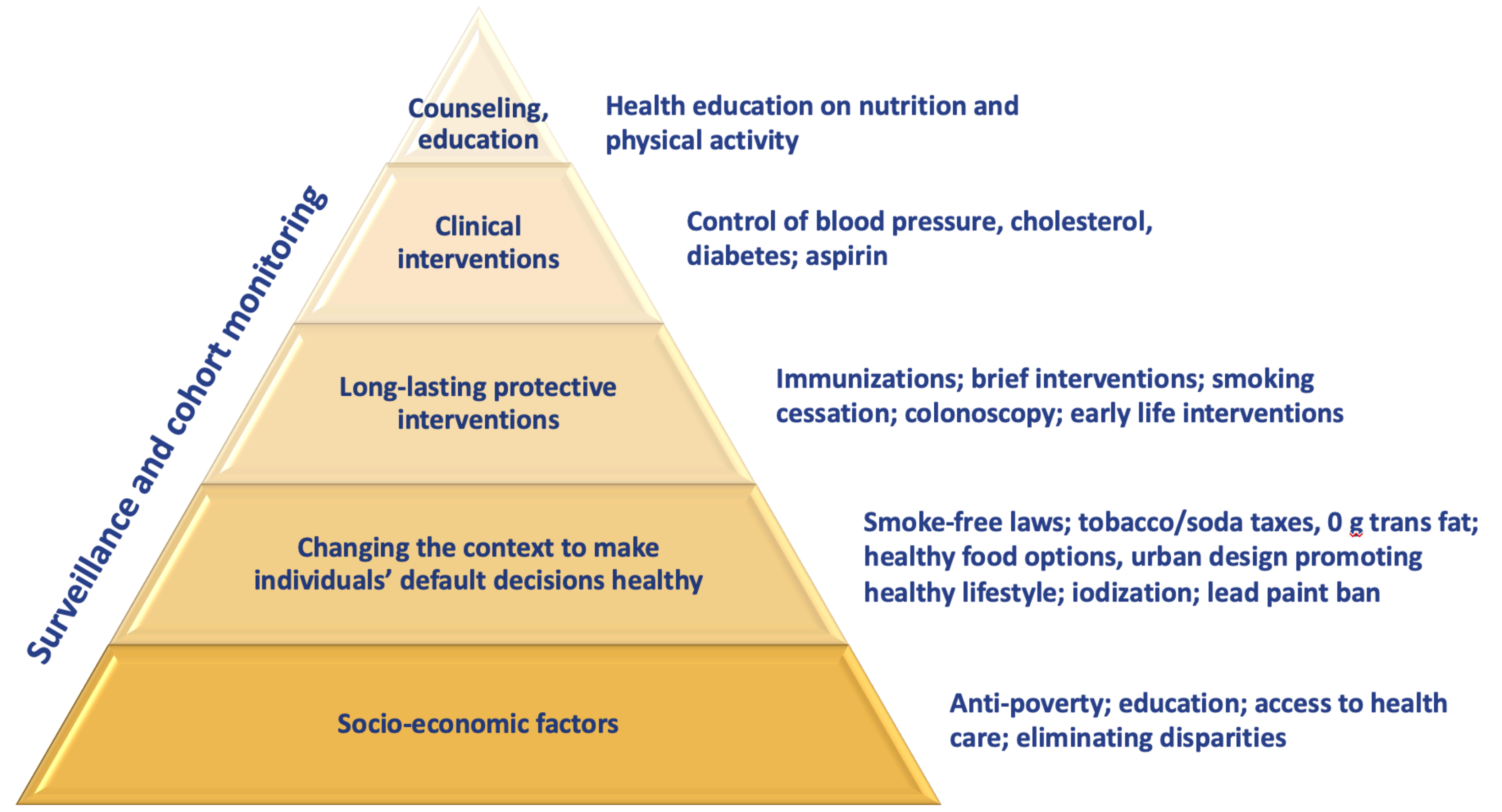


Increased individual effort needed



Increased population impact

Source: Hood, C.M., Genus, K.P. Swain, G.R., & Catlin, B. B. (2016), American Journal of Preventive Medicine



Frieden T. American Journal of Public Health. 2010;100(4):590-595.



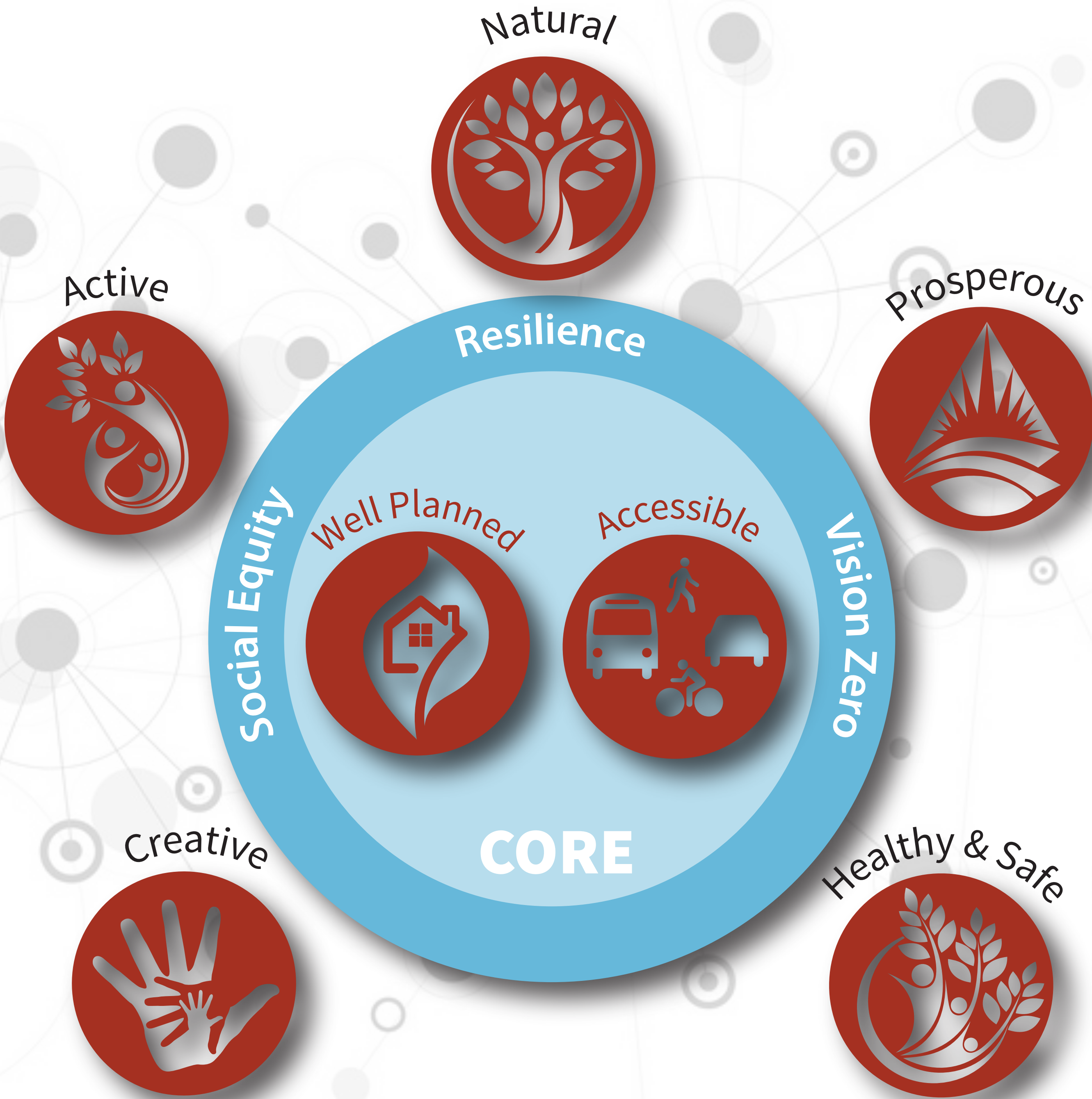
Healthy Community

*Health is a state of complete
physical, mental & social
well-being & not merely the
absence of disease or sickness.*

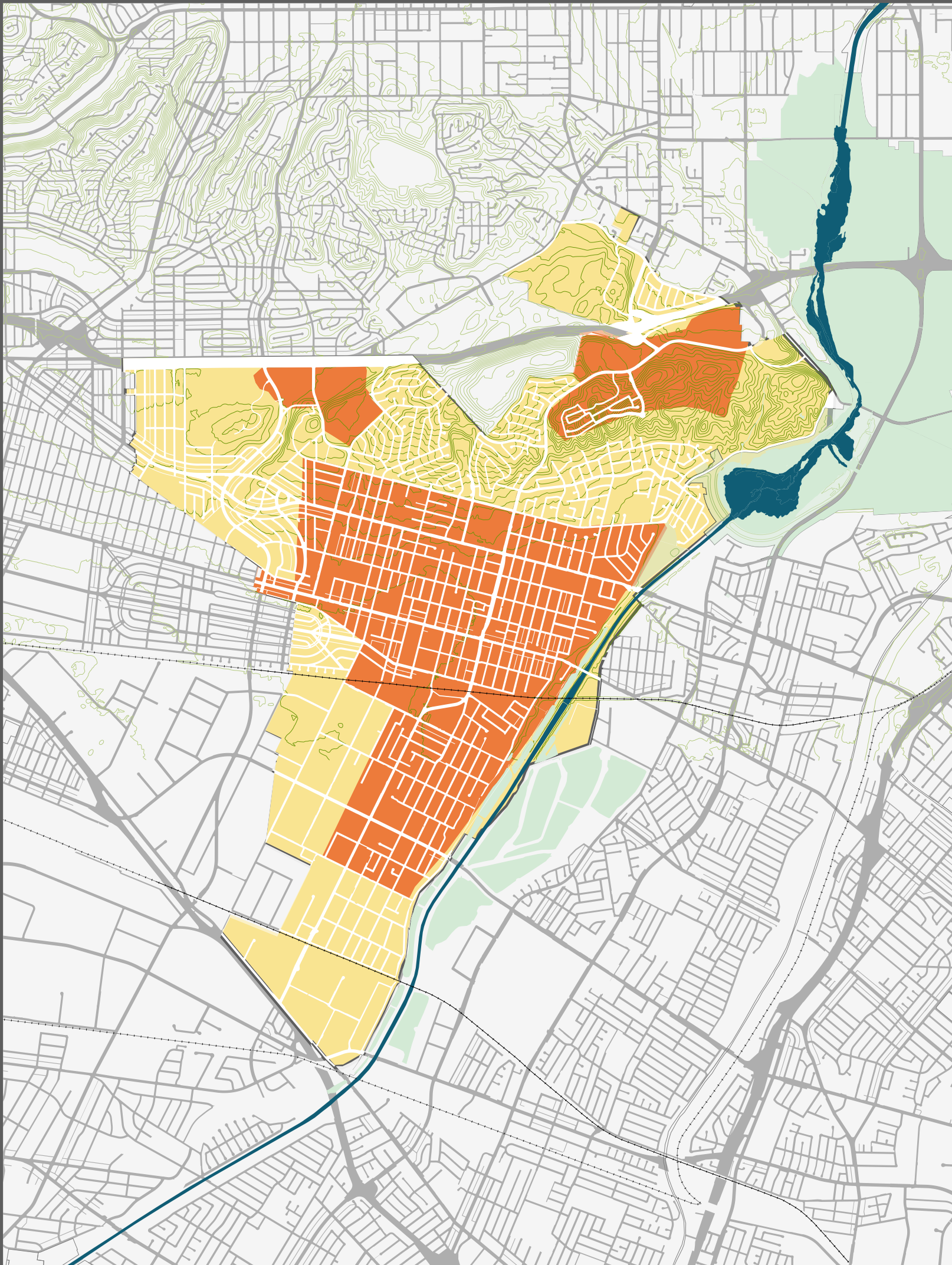
— World Health Organization



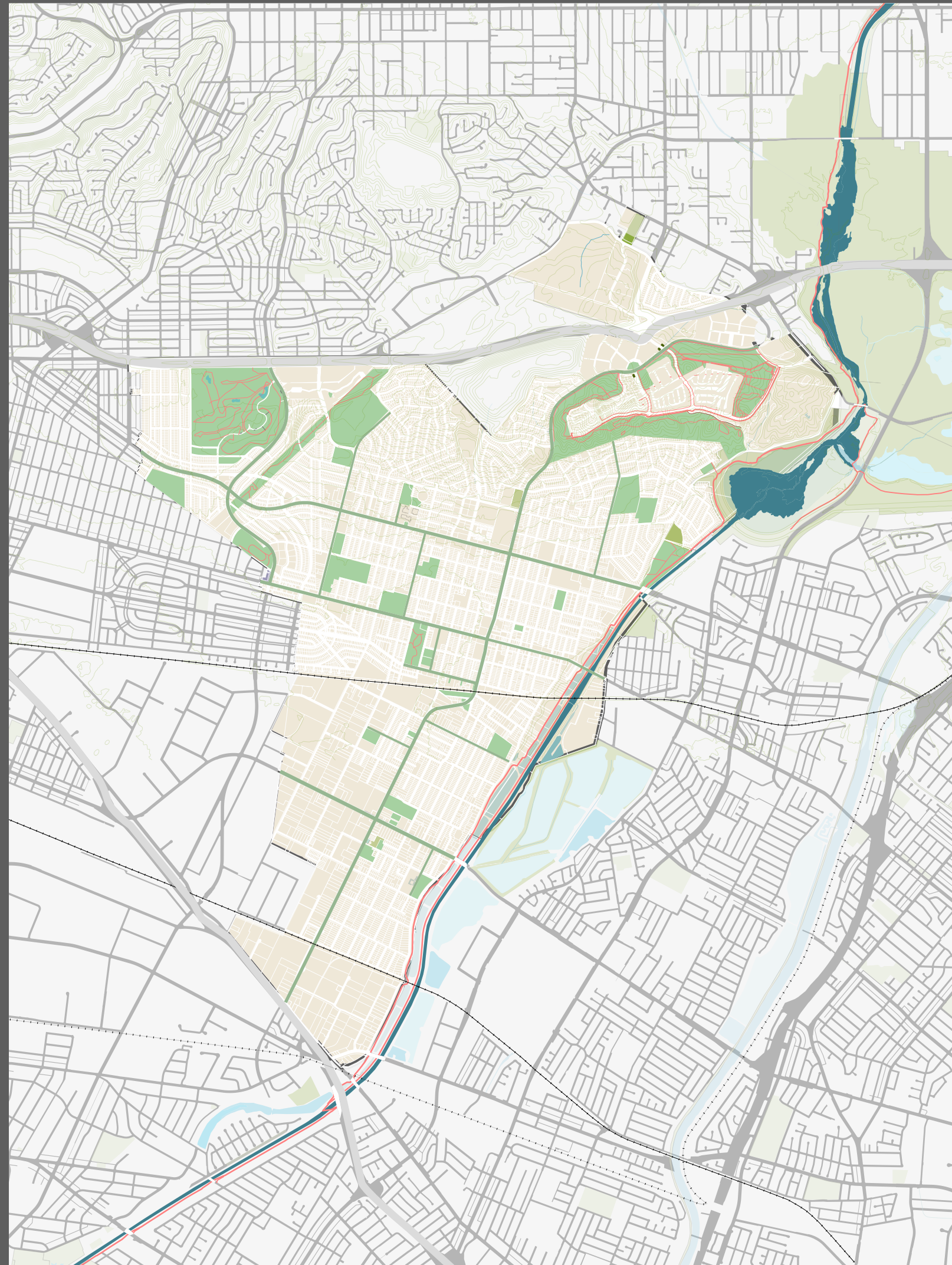
approach



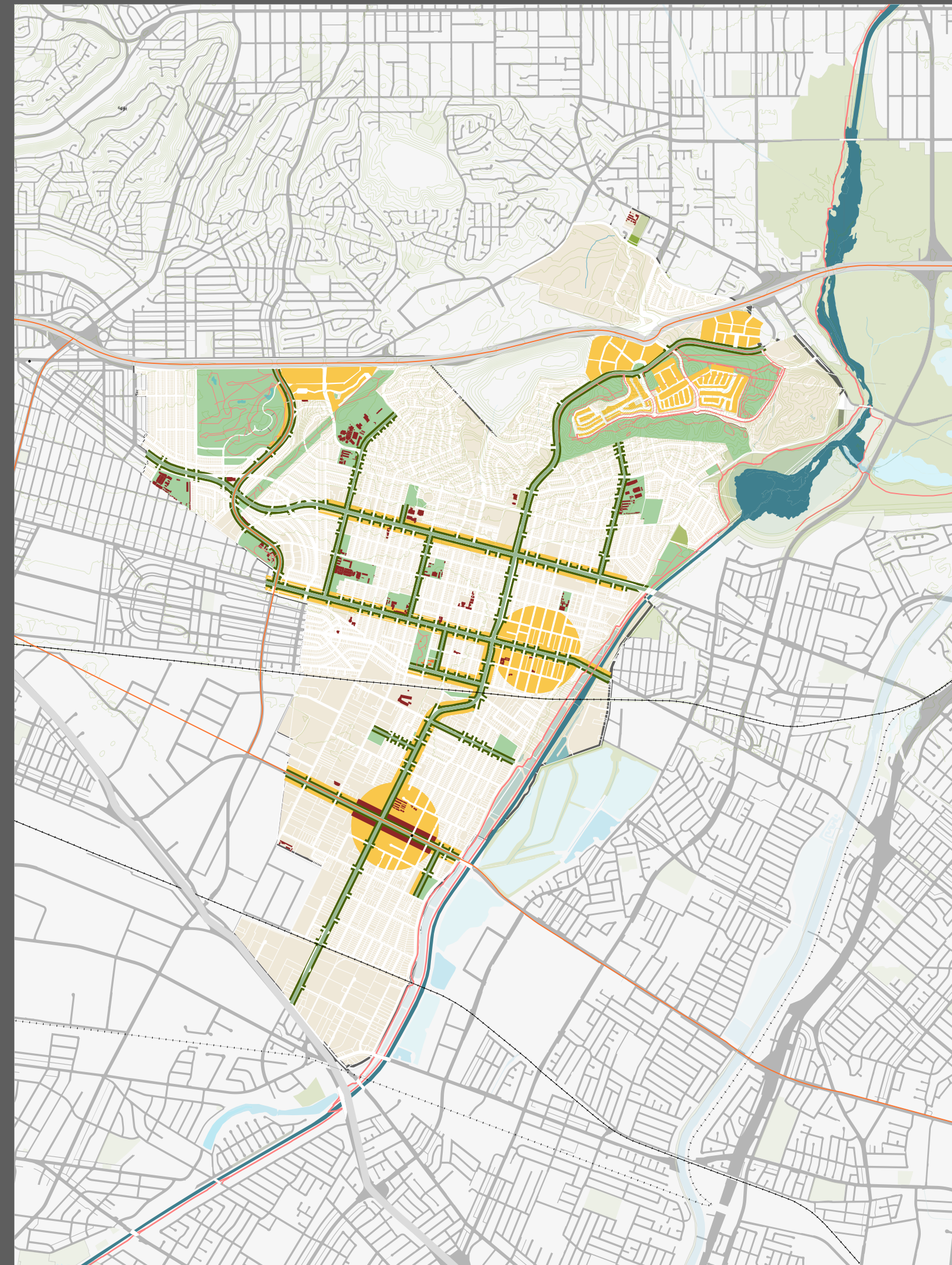
Vision



Areas of Stability & Change



Green Infrastructure



Neighborhood, Corridors & Centers

1

Prevention

3

Healthy Choice
the
Easy Choice



2

Collaborate
for
Multiple Benefits

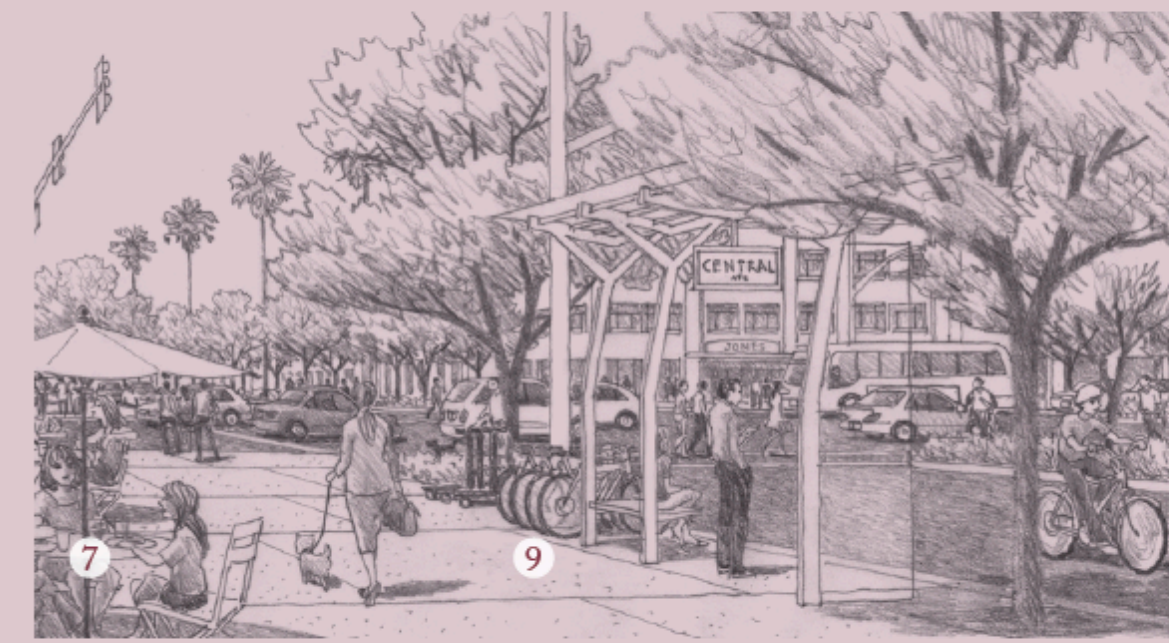
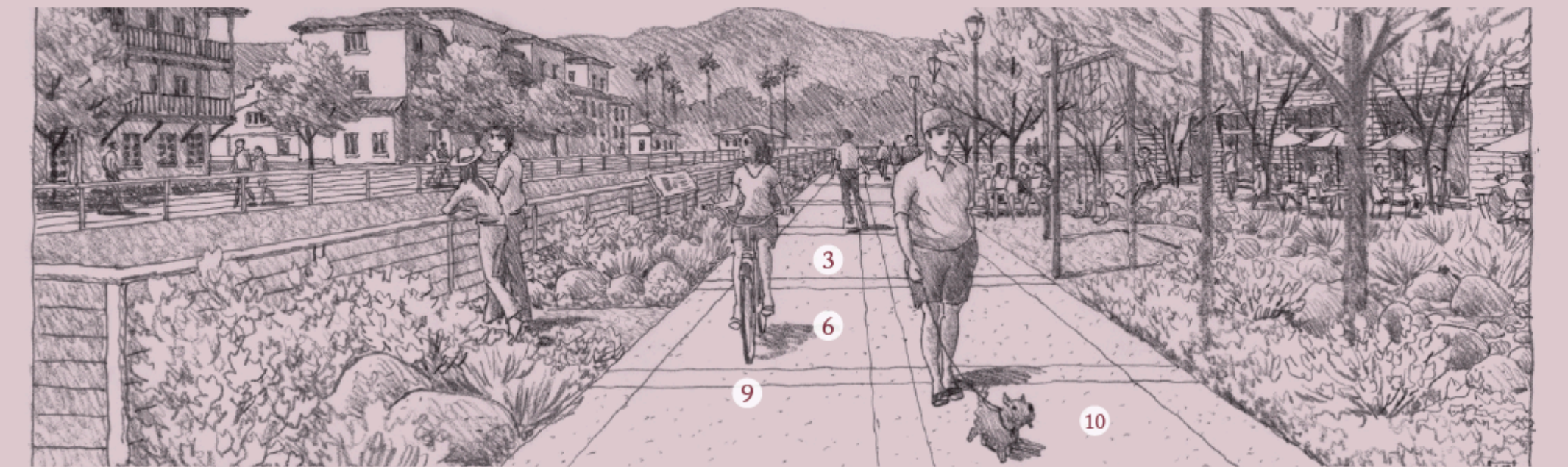
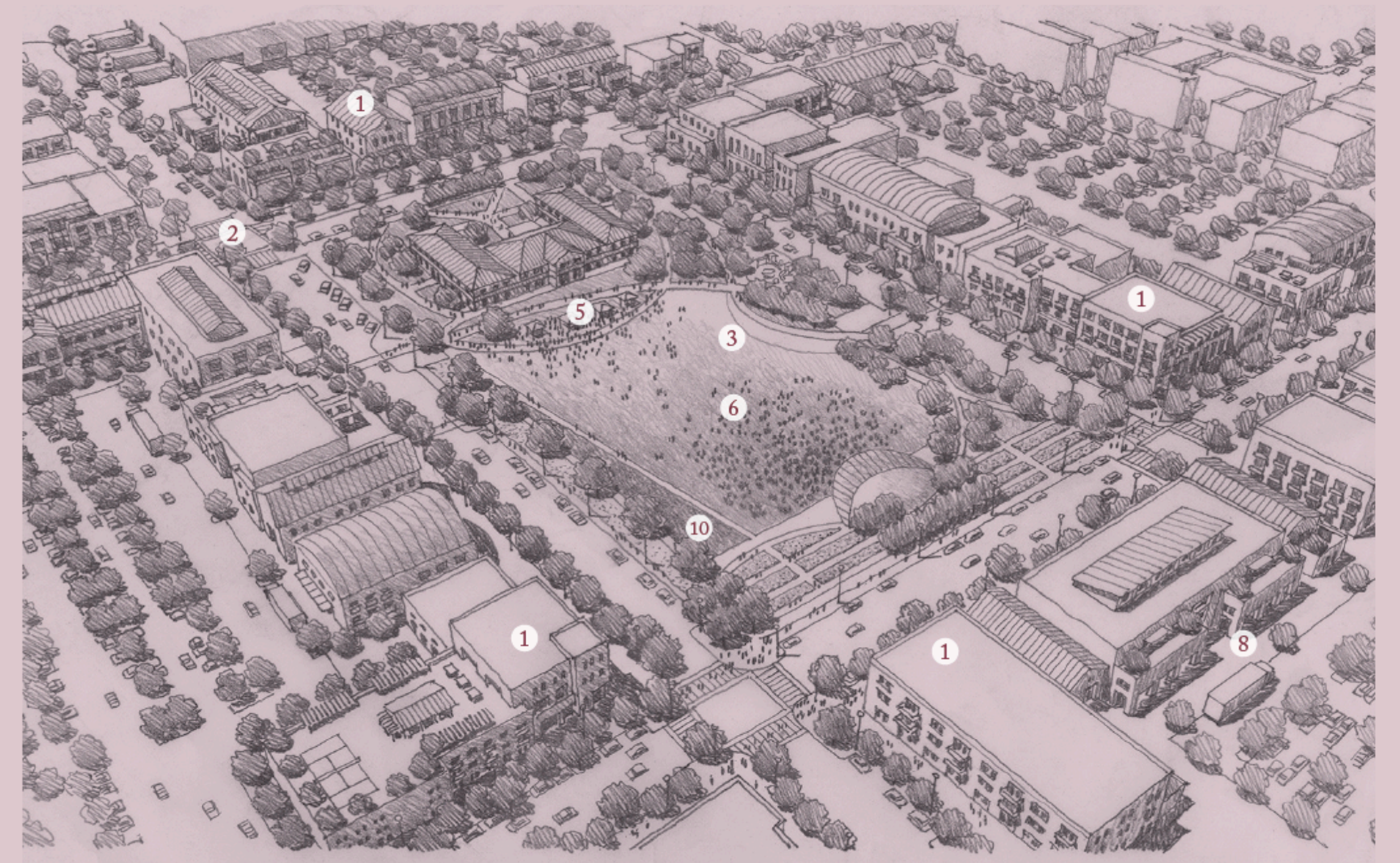
4

Equity

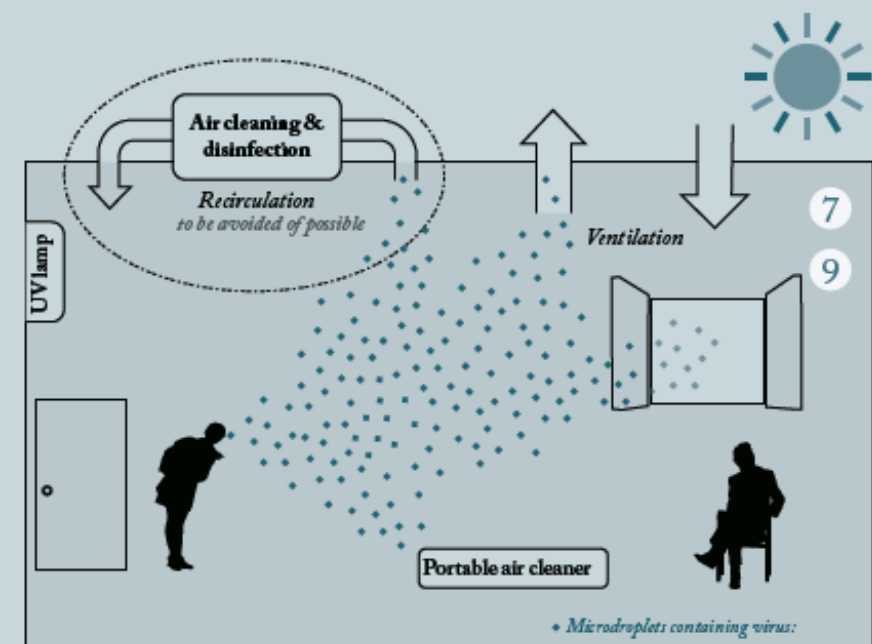
1. Built Environment

Healthy City Design

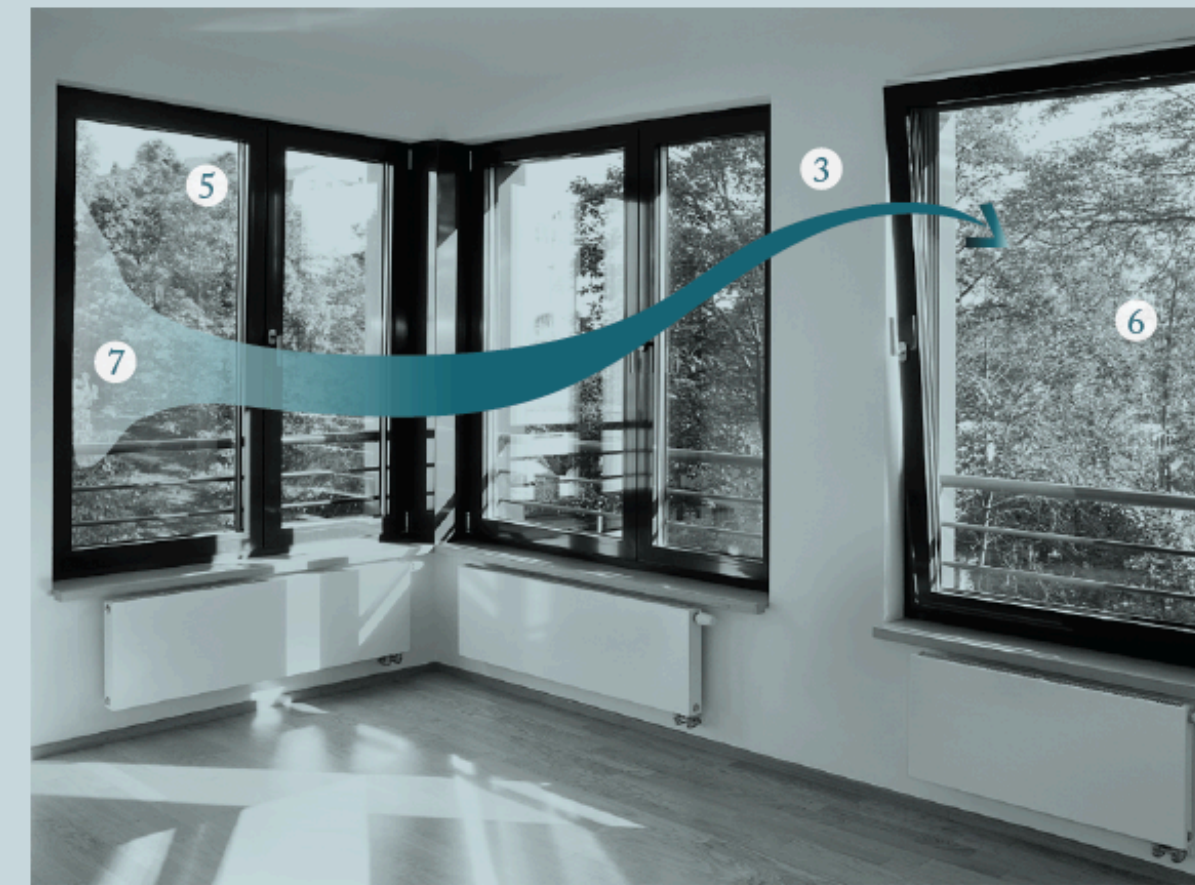
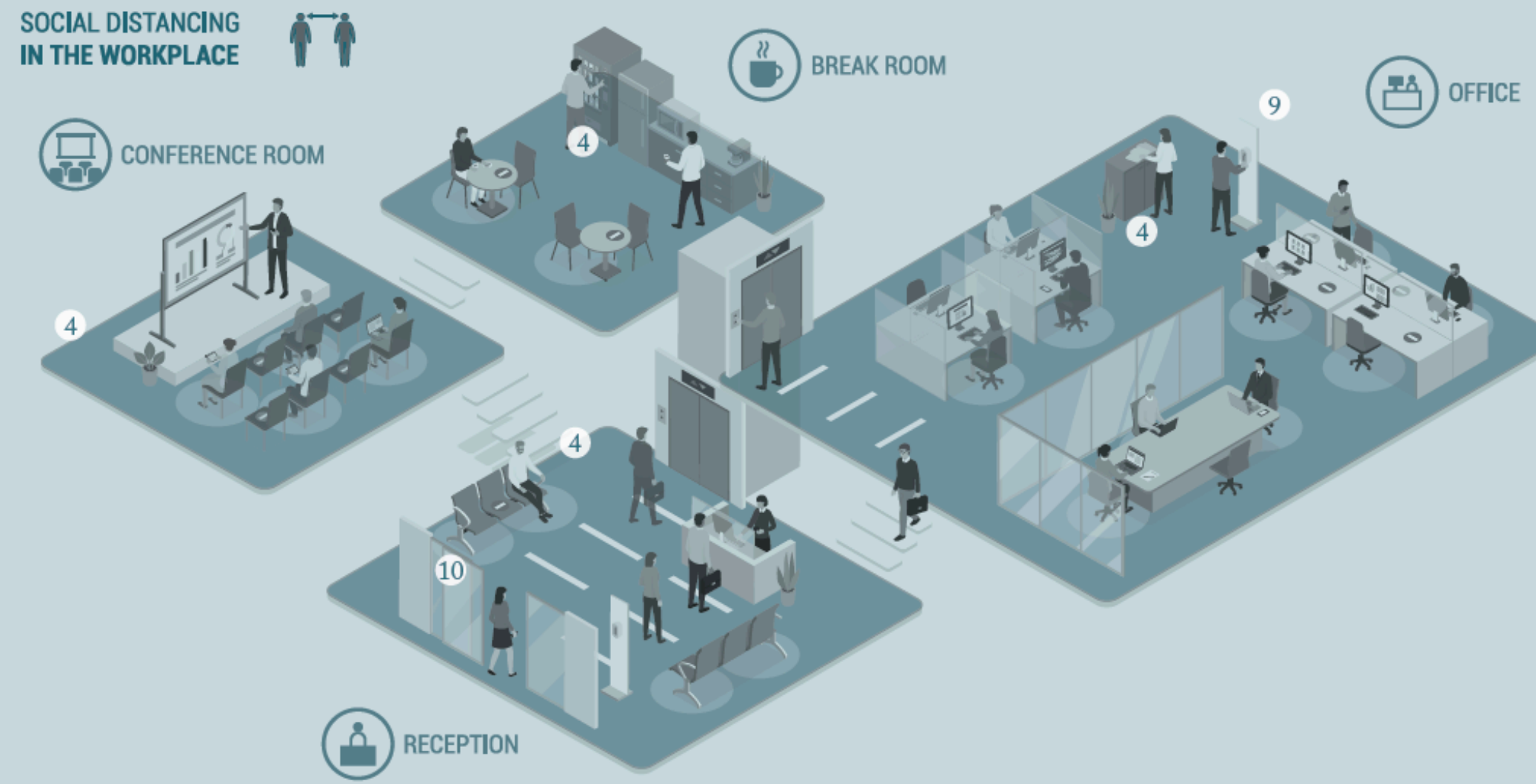
-  **1** Mix Uses
-  **2** Network of human scale streets
-  **3** Active Living
-  **4** Shared Streets
-  **5** Access to Nutritious Food
-  **6** Access to Open Space
-  **7** Outdoor Seating
-  **8** Noise Control
-  **9** Bike infrastructure
-  **10** Pet Friendly






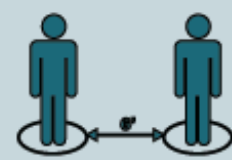



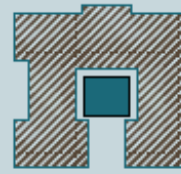


Montclair General Plan



**SOCIAL DISTANCING
IN THE WORKPLACE**



**Healthy
Building Design**

-  **1** Exercise Stairs
-  **2** Balconies
-  **3** Cross Ventillation
-  **4** Social Distance
-  **5** Noise Control
-  **6** Natural Lighting
-  **7** Air Circulation
-  **8** Access to Open Space
-  **9** Safety, Security
-  **10** Touch free access

2. Improve air quality

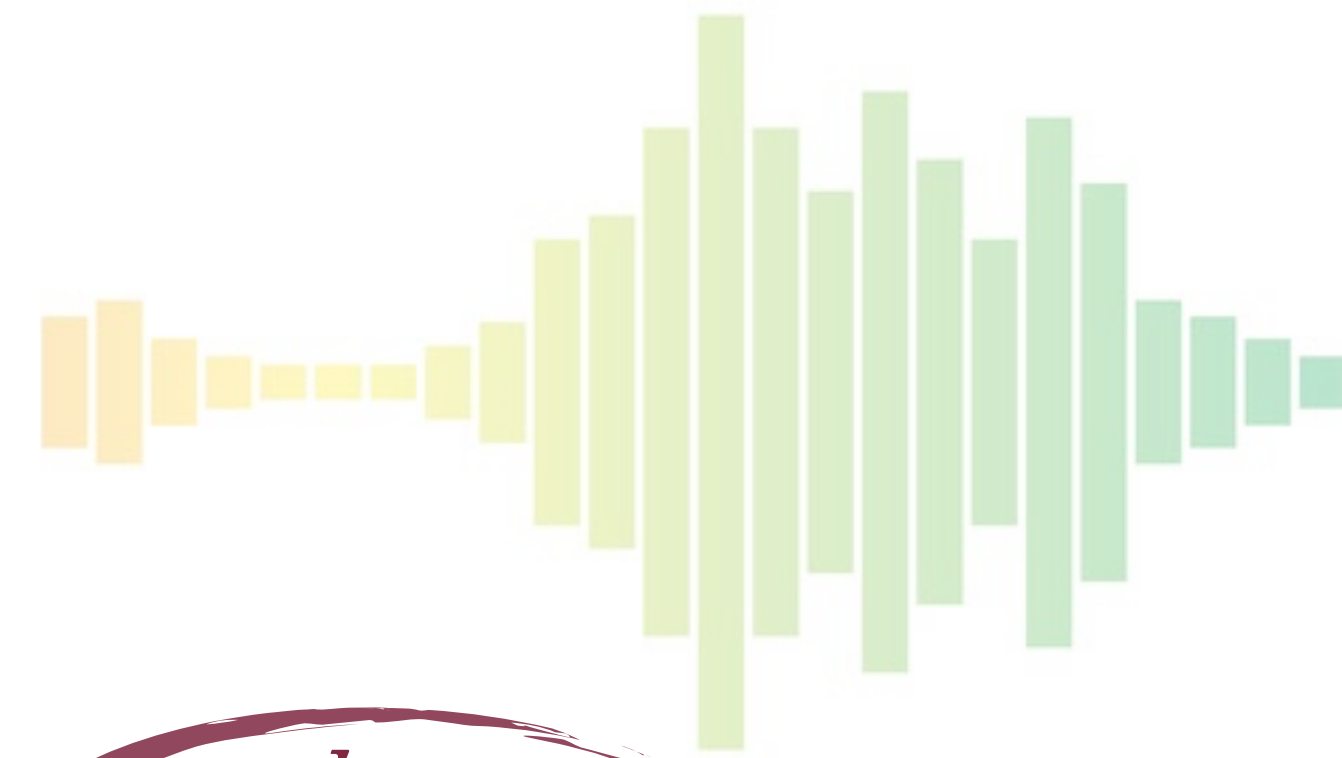
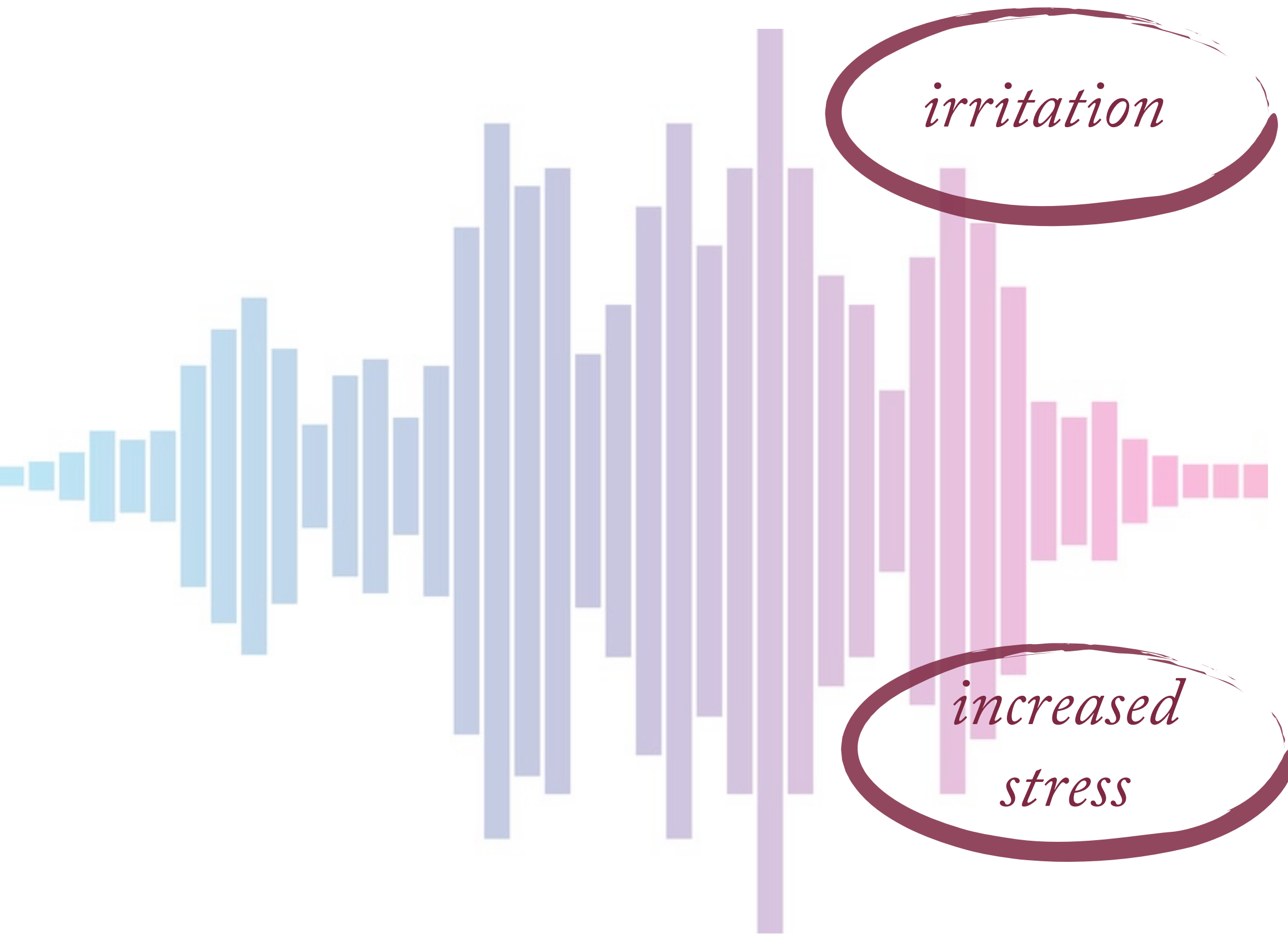


3. Improve neighborhood retail



4. Minimize Noise Impacts

Health Effects of Noise Pollution



5. Promote mental health



Safe Community



1

Holistic
Community Safety

2

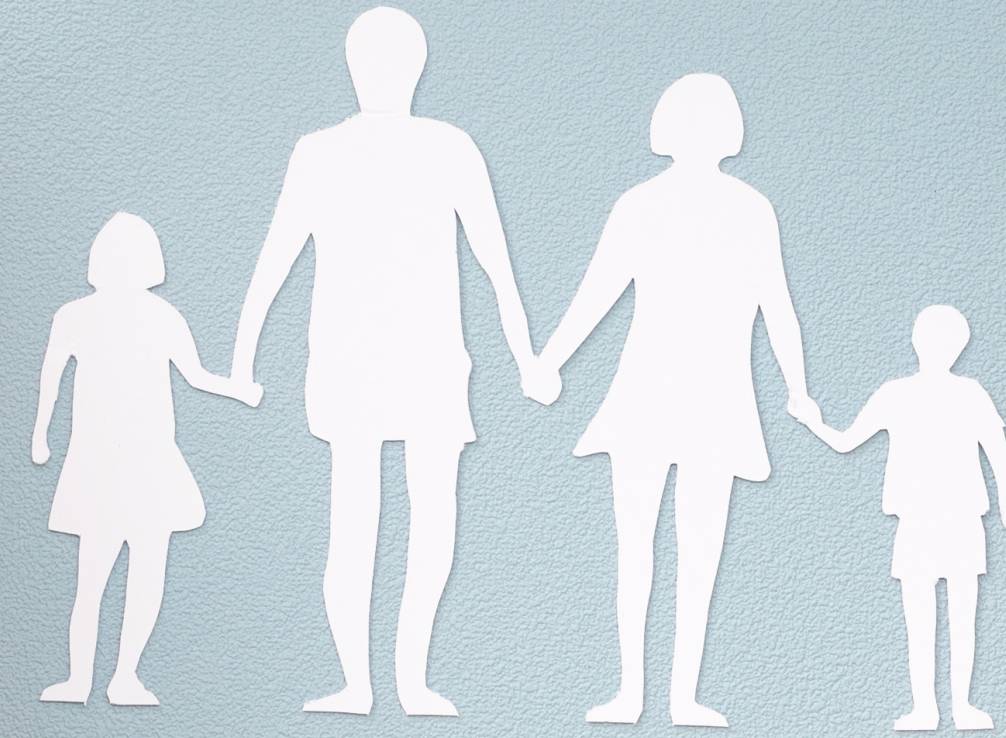
Prevention

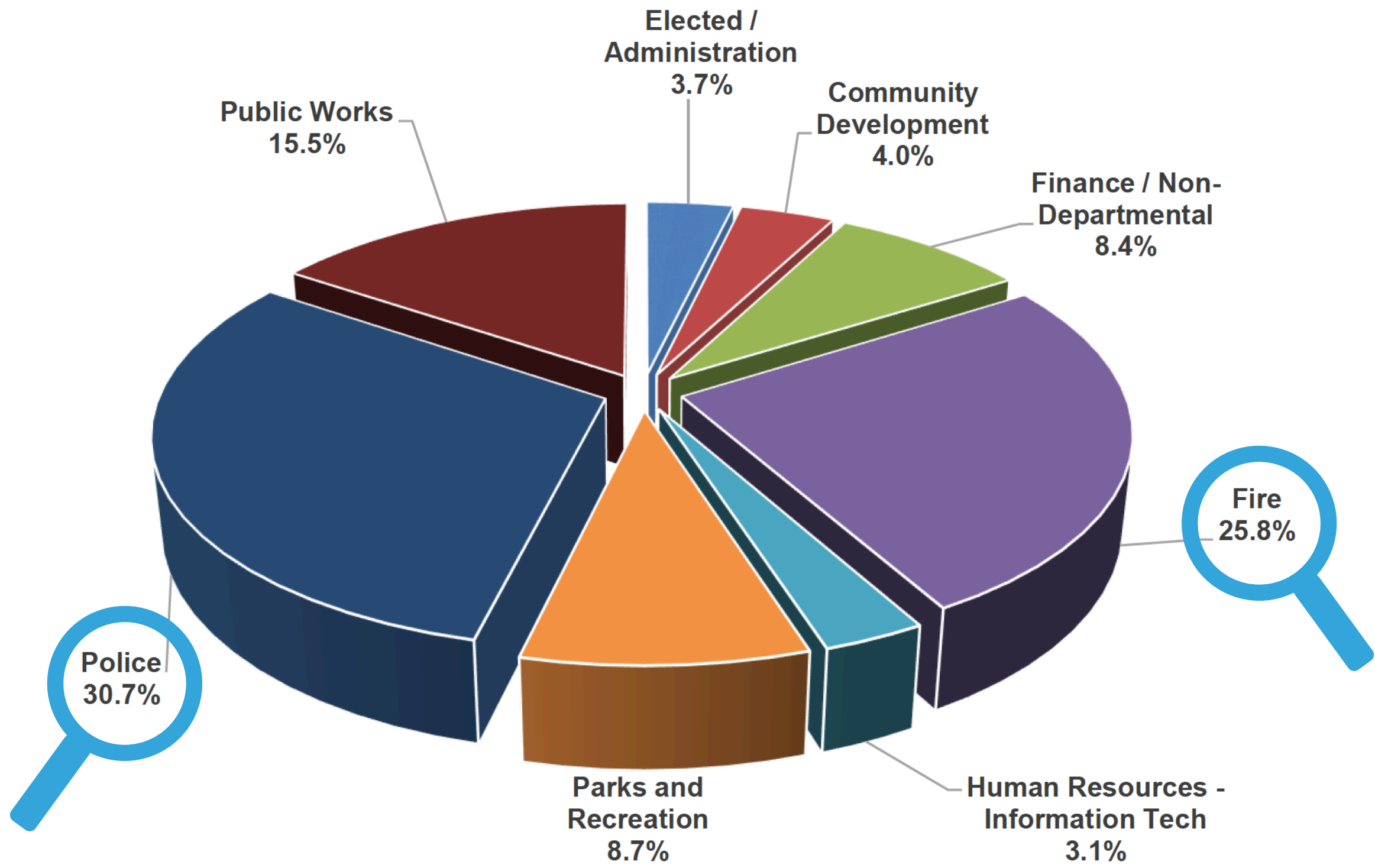
3

Collaboration
&
Mutual Respect

4

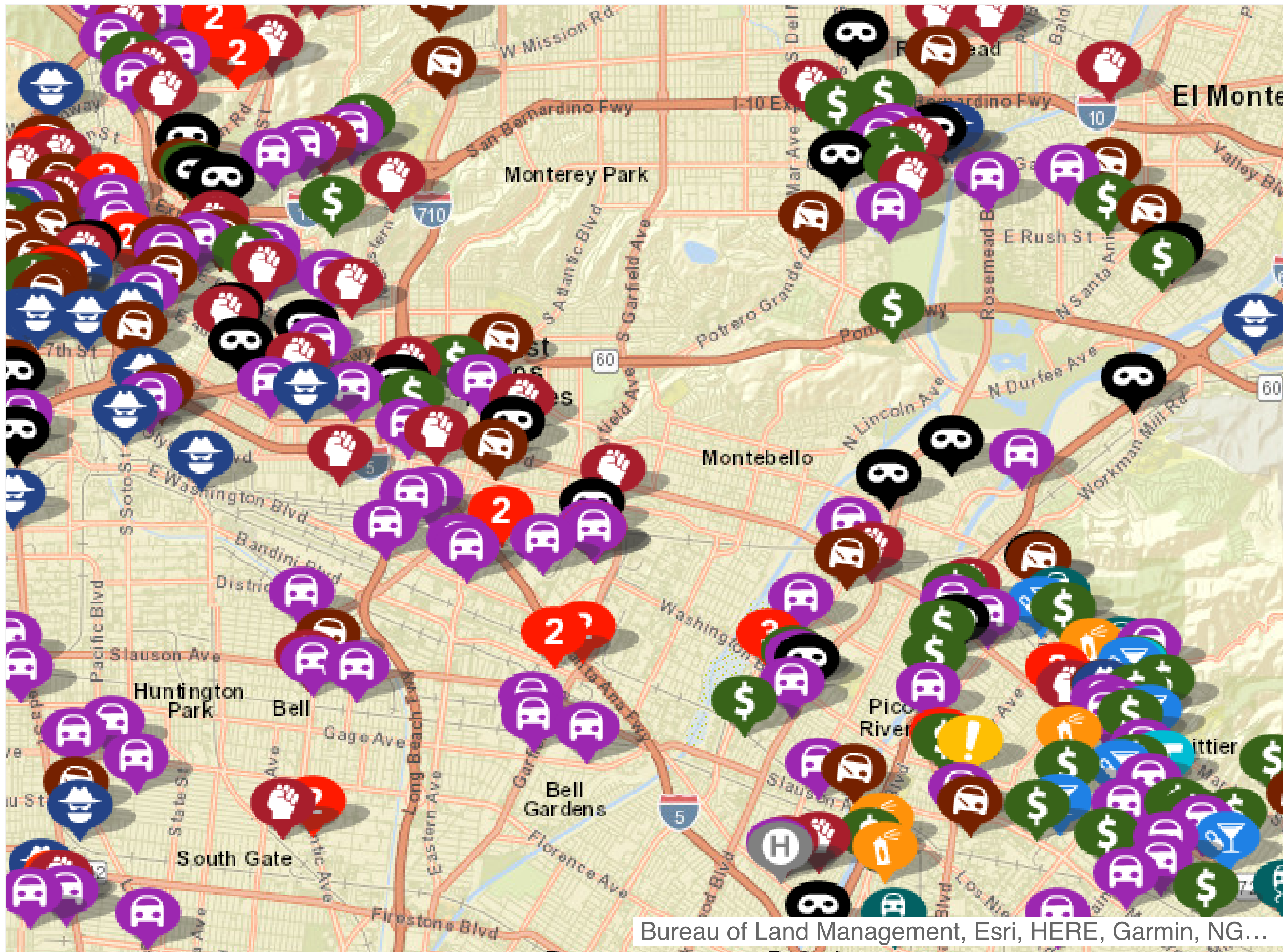
Equity



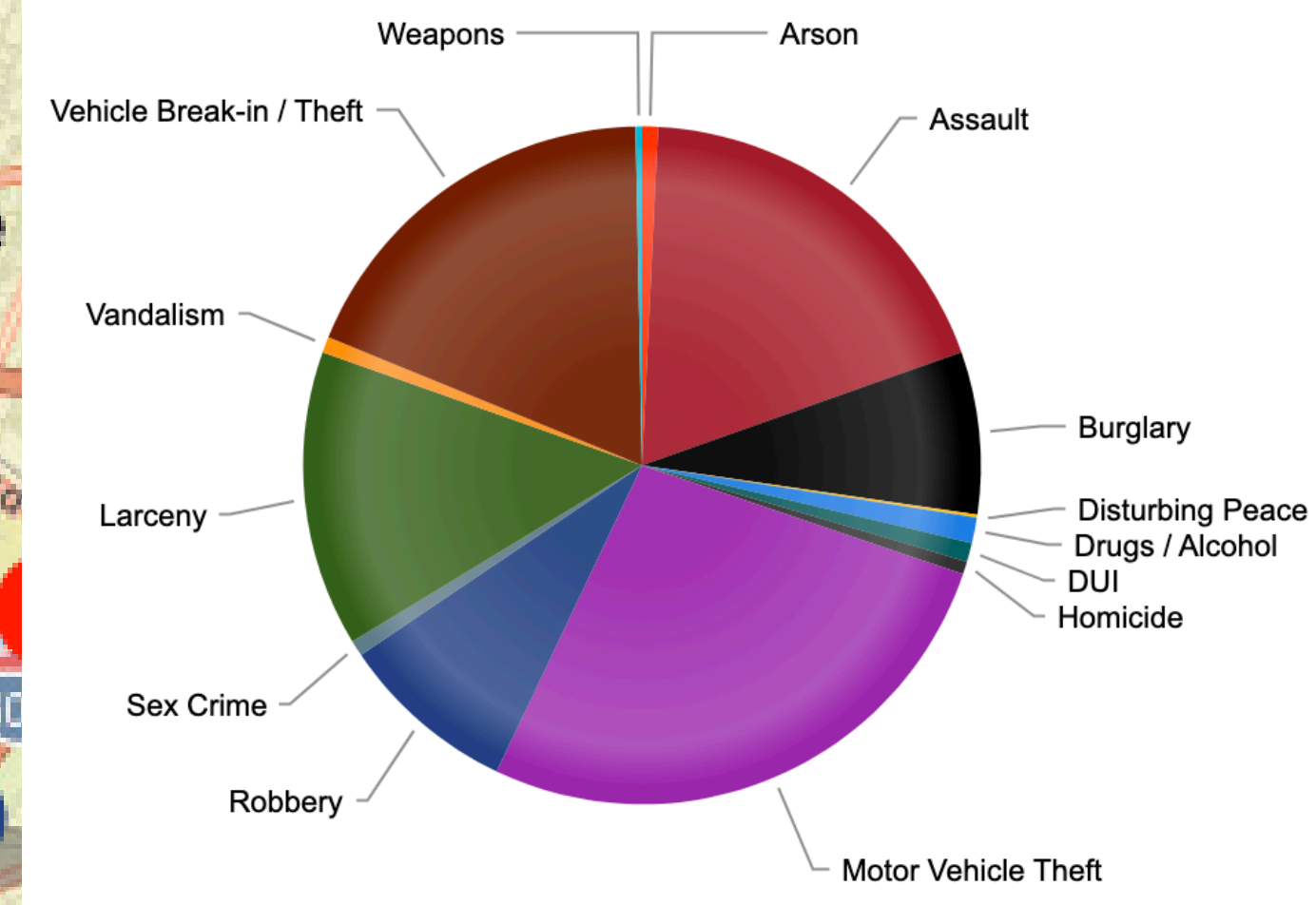


Police & Fire
56c





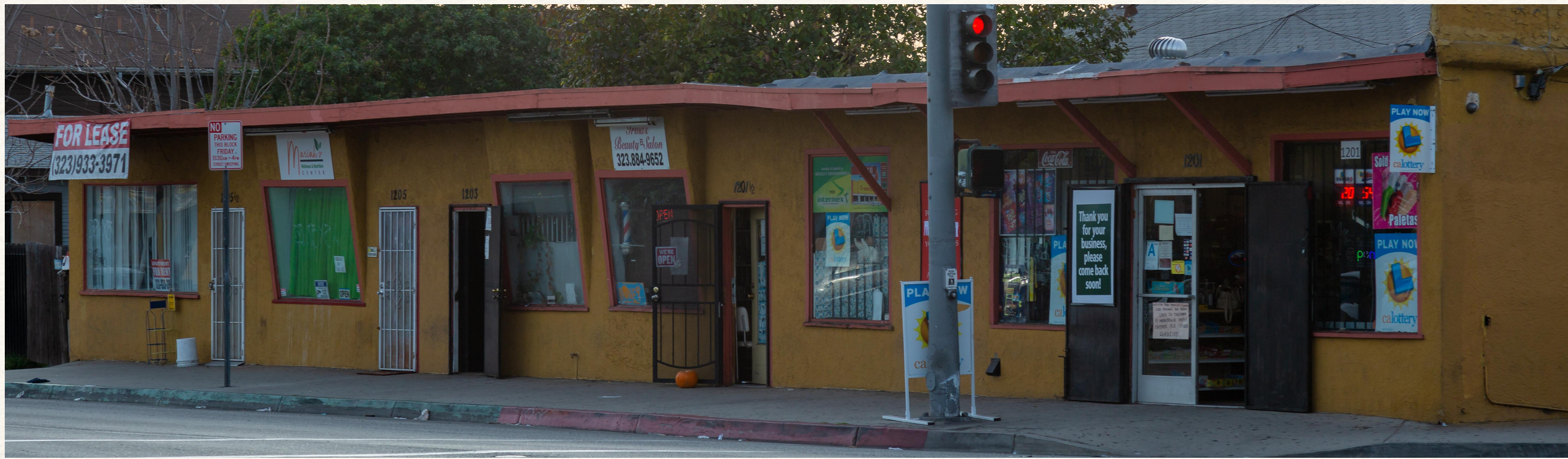
Bureau of Land Management, Esri, HERE, Garmin, NG...



12/10/21 to 1/10/22

Source: Crime mapping.com

1



2



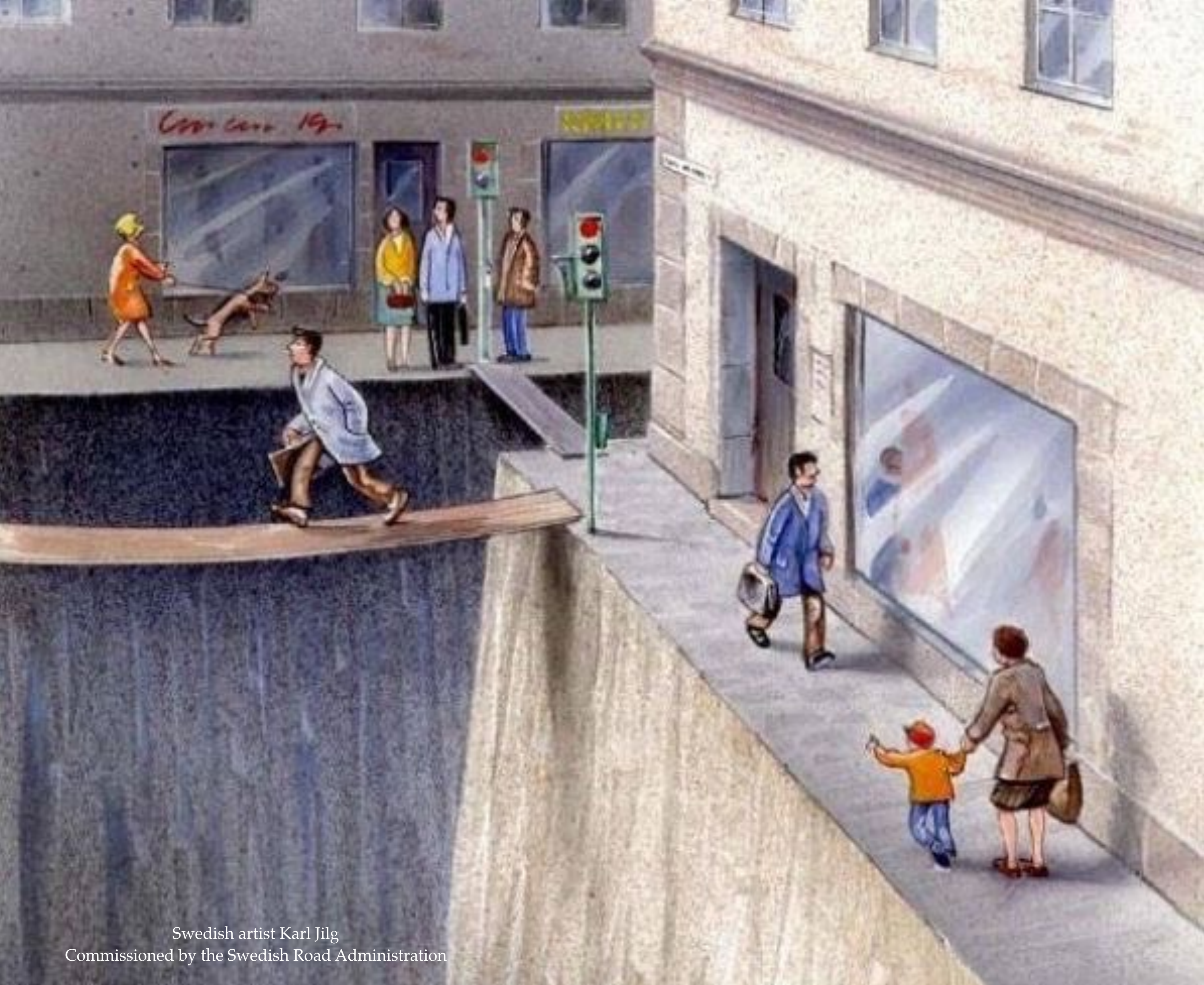
Where do you feel safe?

3



1. Design out Crime





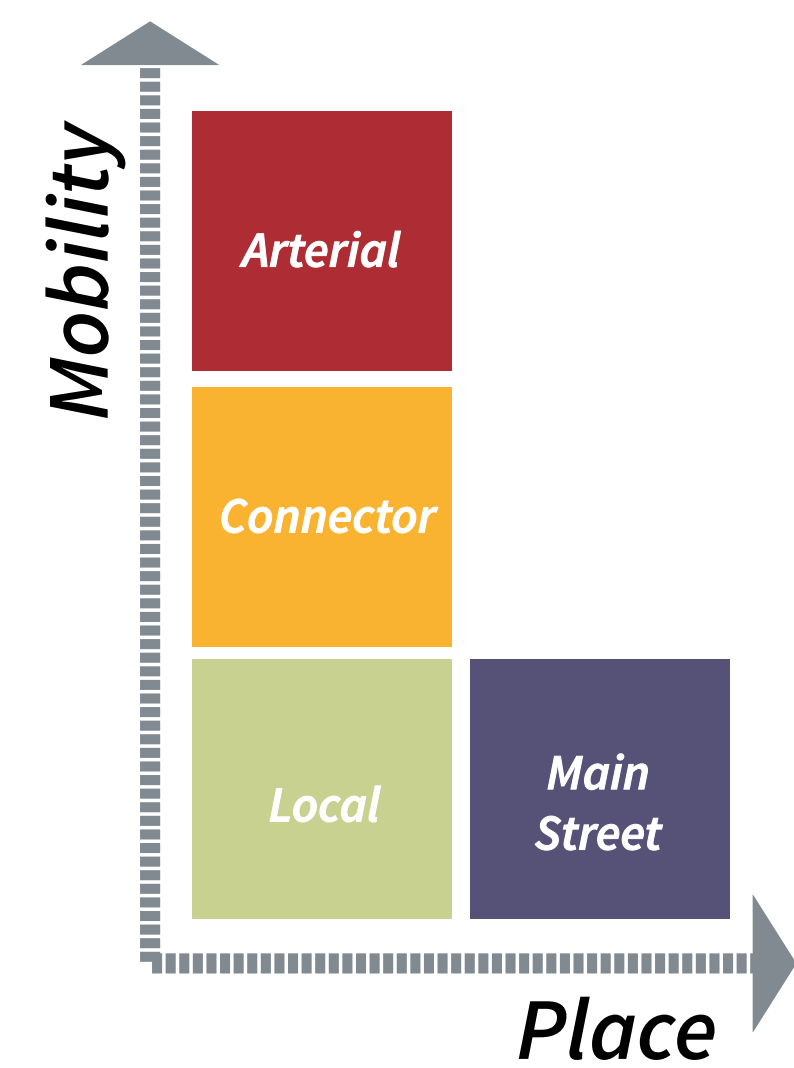
Swedish artist Karl Jilg
Commissioned by the Swedish Road Administration

Streets



Context based

- Community Vision
- Context
- Multimodal
- Support adjacent land uses



2. Safe Streets

Jackson Street, Saint Paul, MN



Source: Toole Design

3. Improve the image of safety in neighborhoods.



Source: Montebello Police Website



Partners

- City
- Retail
- Schools
- Businesses
- Residents & Youth
- Community Based Organizations
- Faith Based Organizations
- Health Care Providers

TOGETHER.



www.planmontebello.com

generalplanupdate@cityofmontebello.com