

# Montebello



**Our Natural, Active & Creative Community**

2-17-22 Focus Group Meeting, 6:00 pm

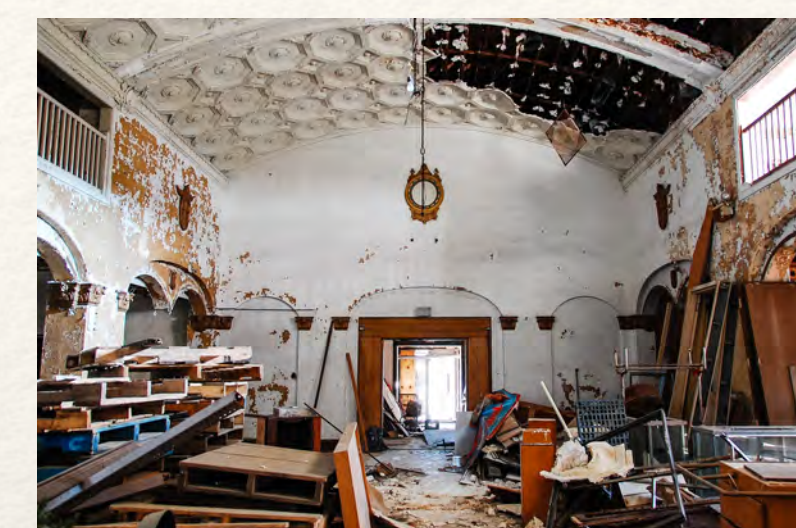




Miss Zella de Milhau



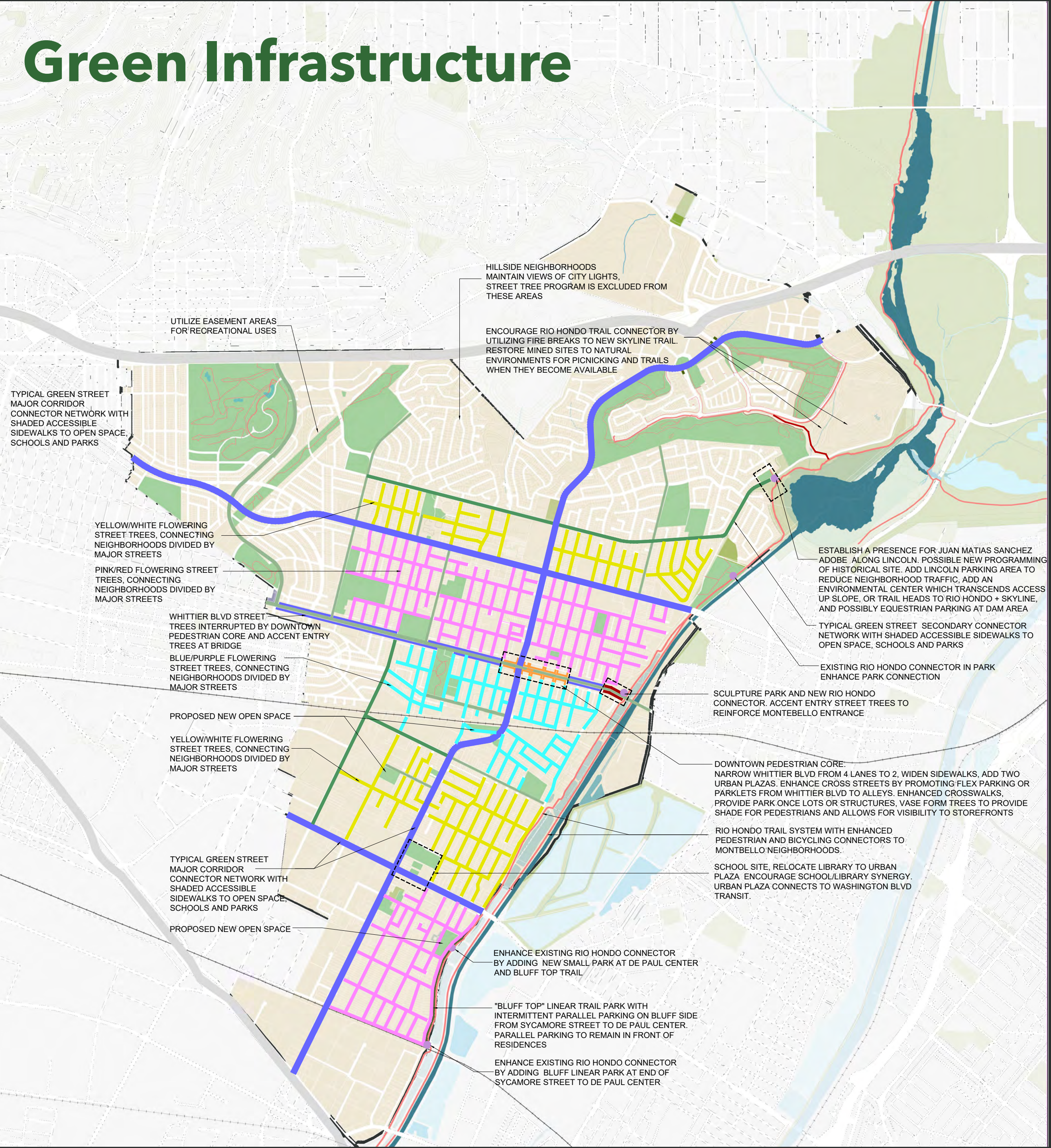




B U I L  
E - I L Theaster Gates  
R - D

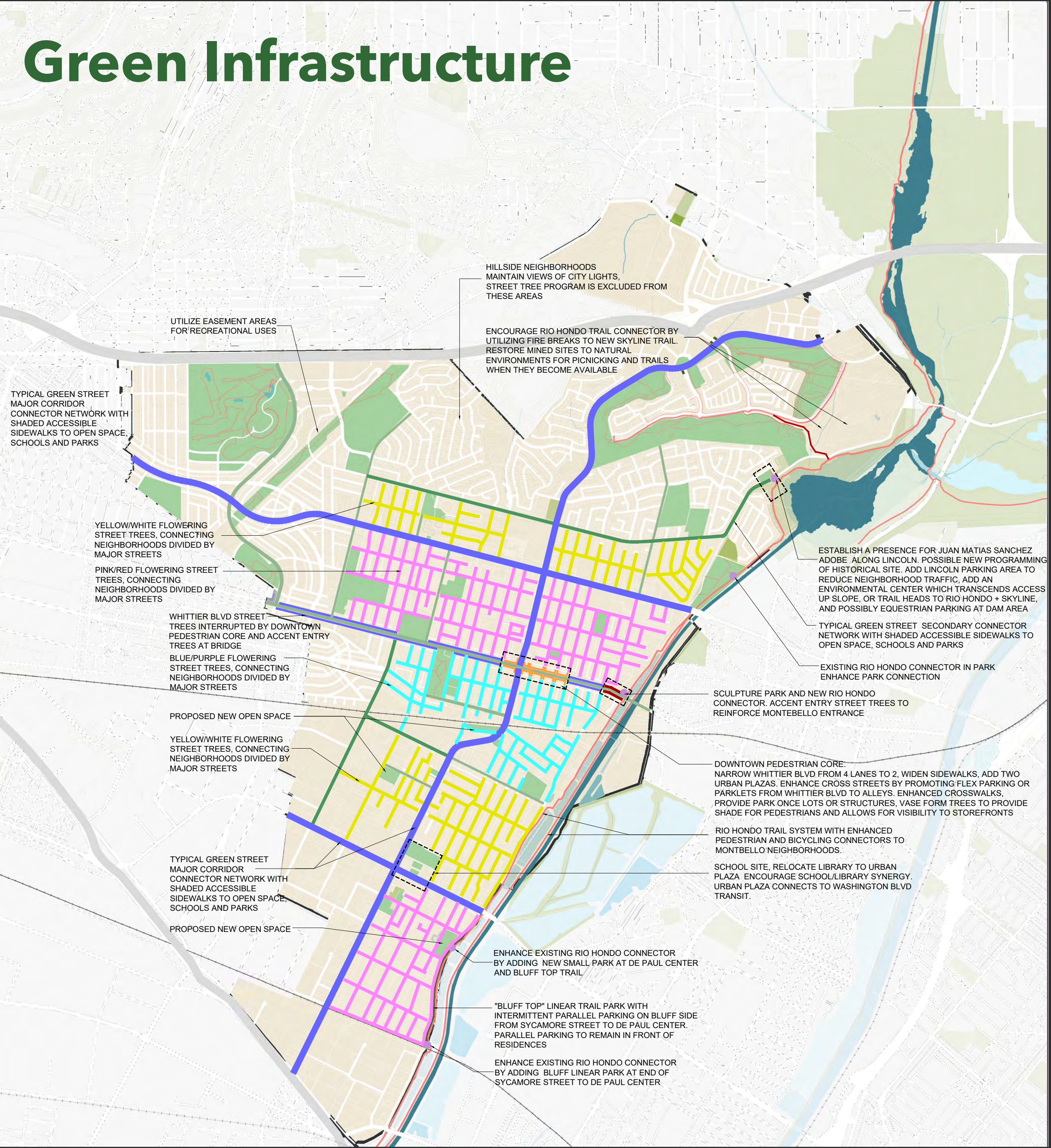


# Green Infrastructure



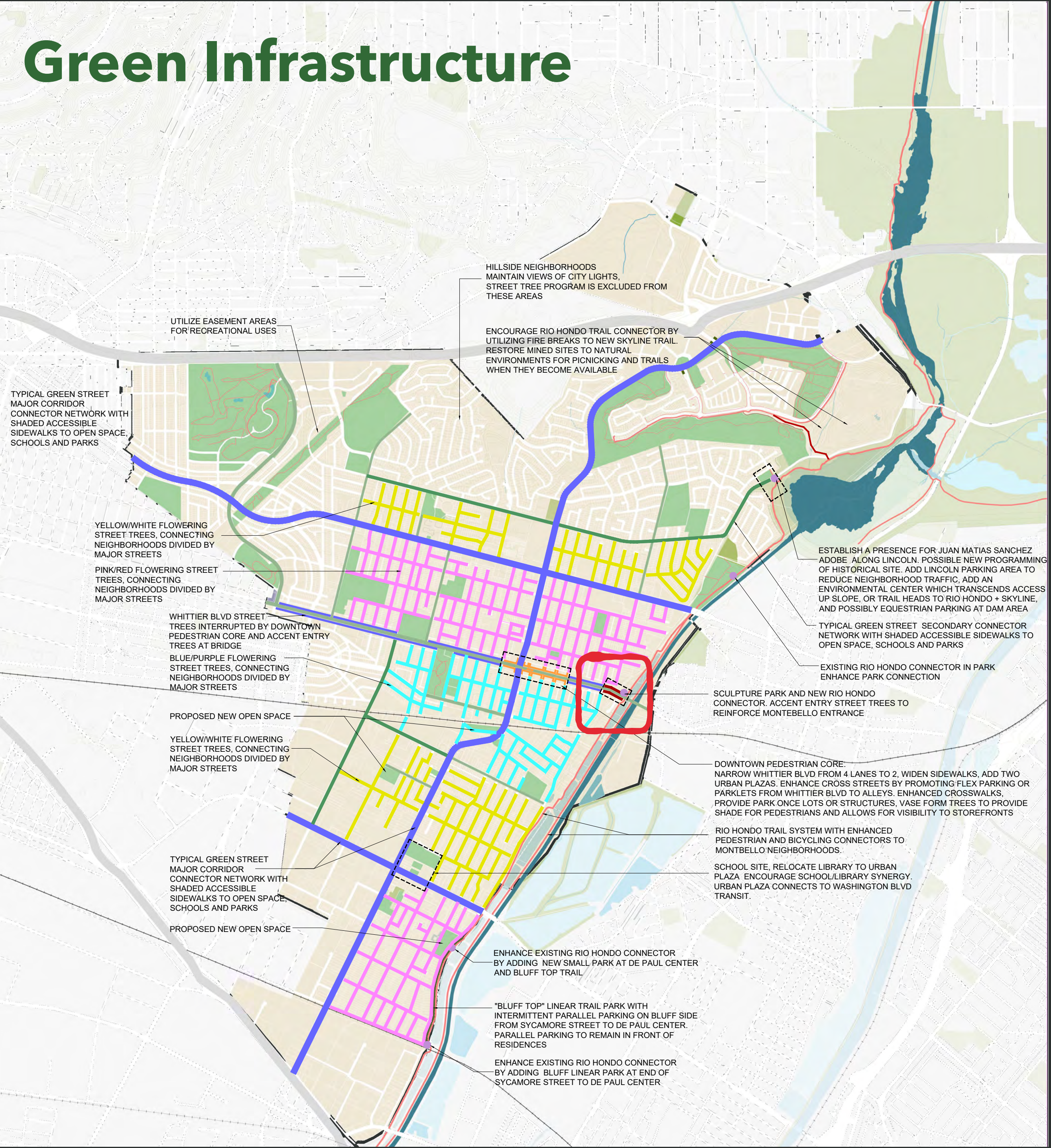


# Green Infrastructure





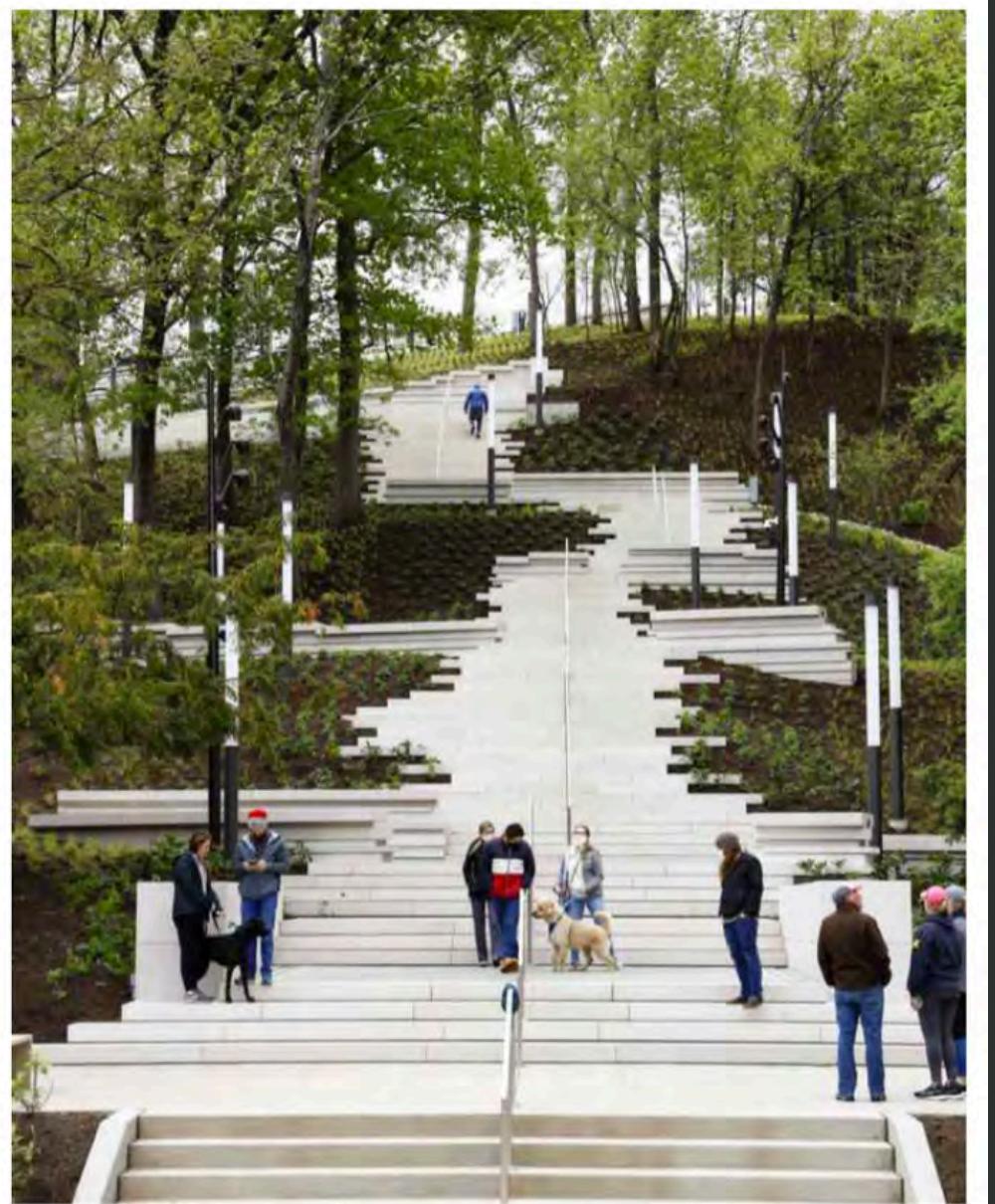
# Green Infrastructure



BAS RELIEF WALL

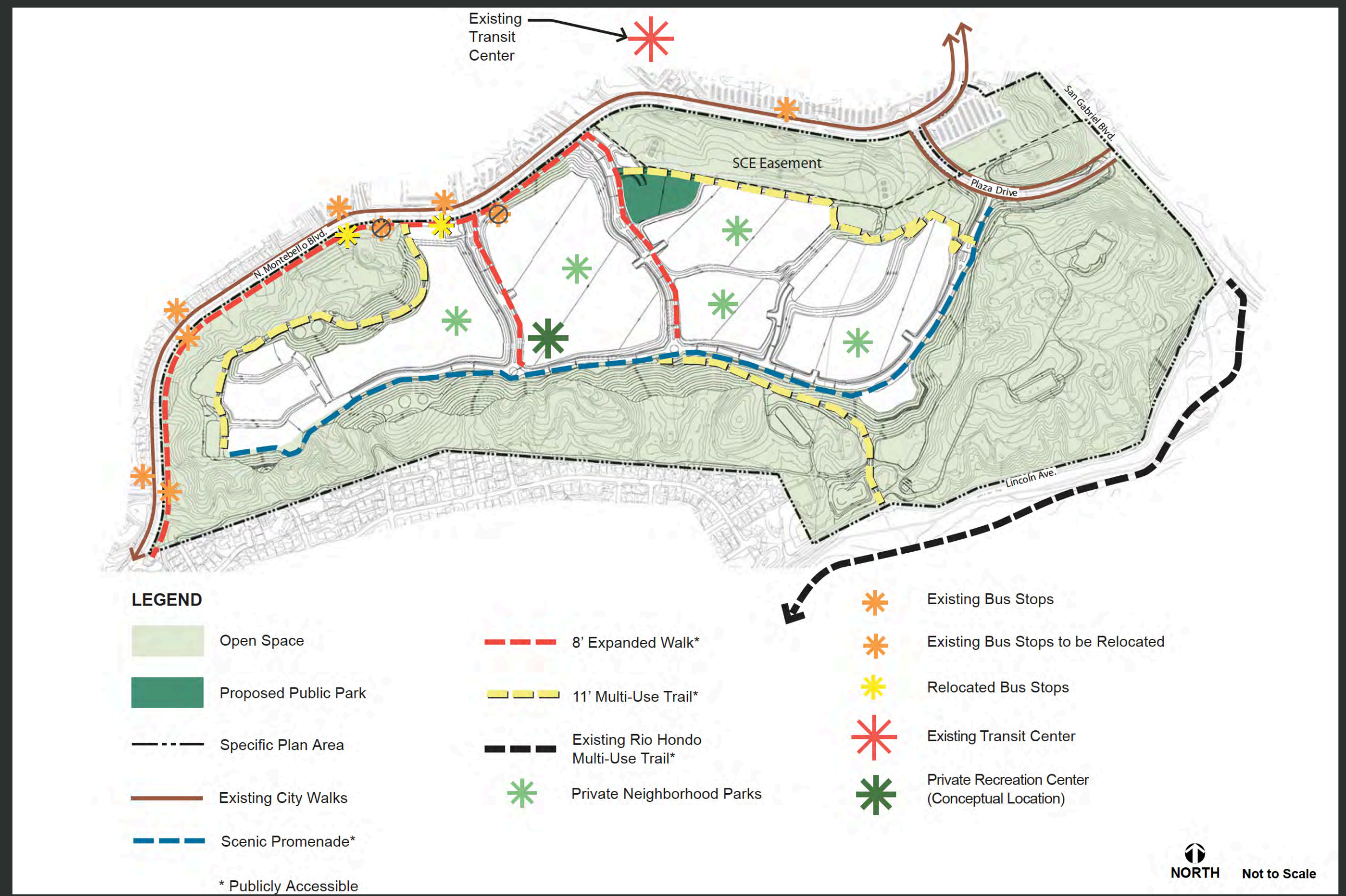
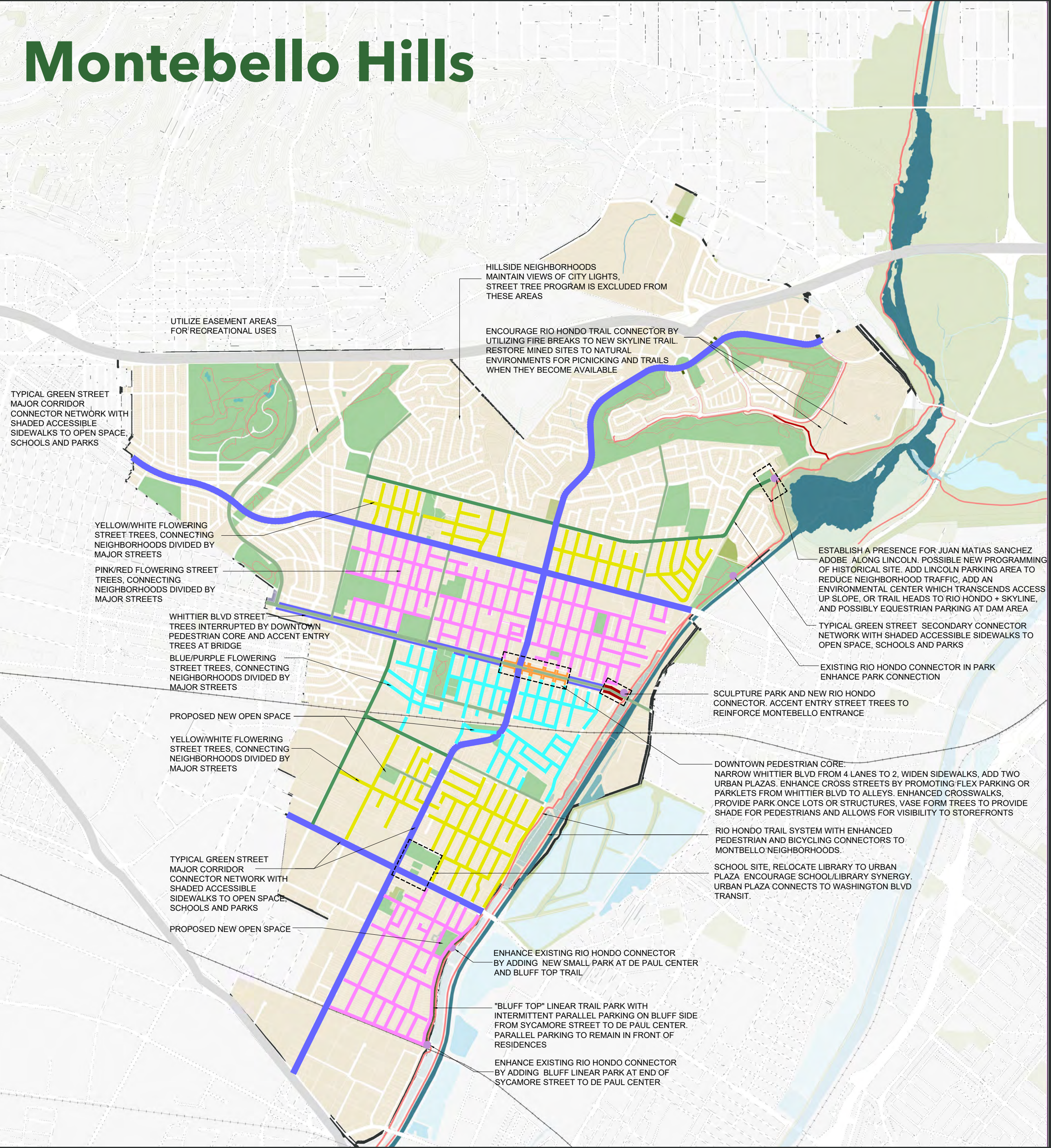


SCULPTURE PIECES



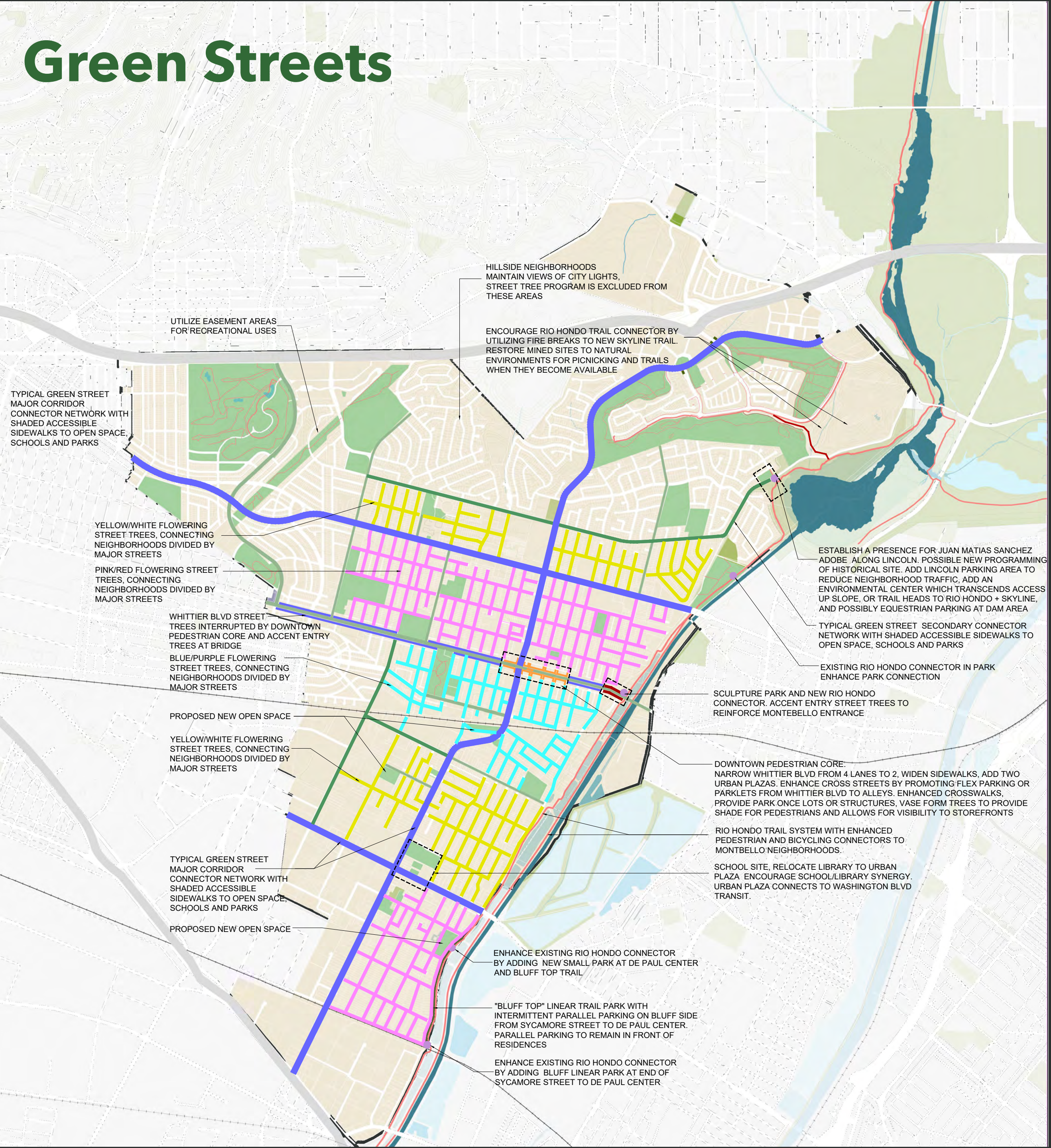


# Montebello Hills



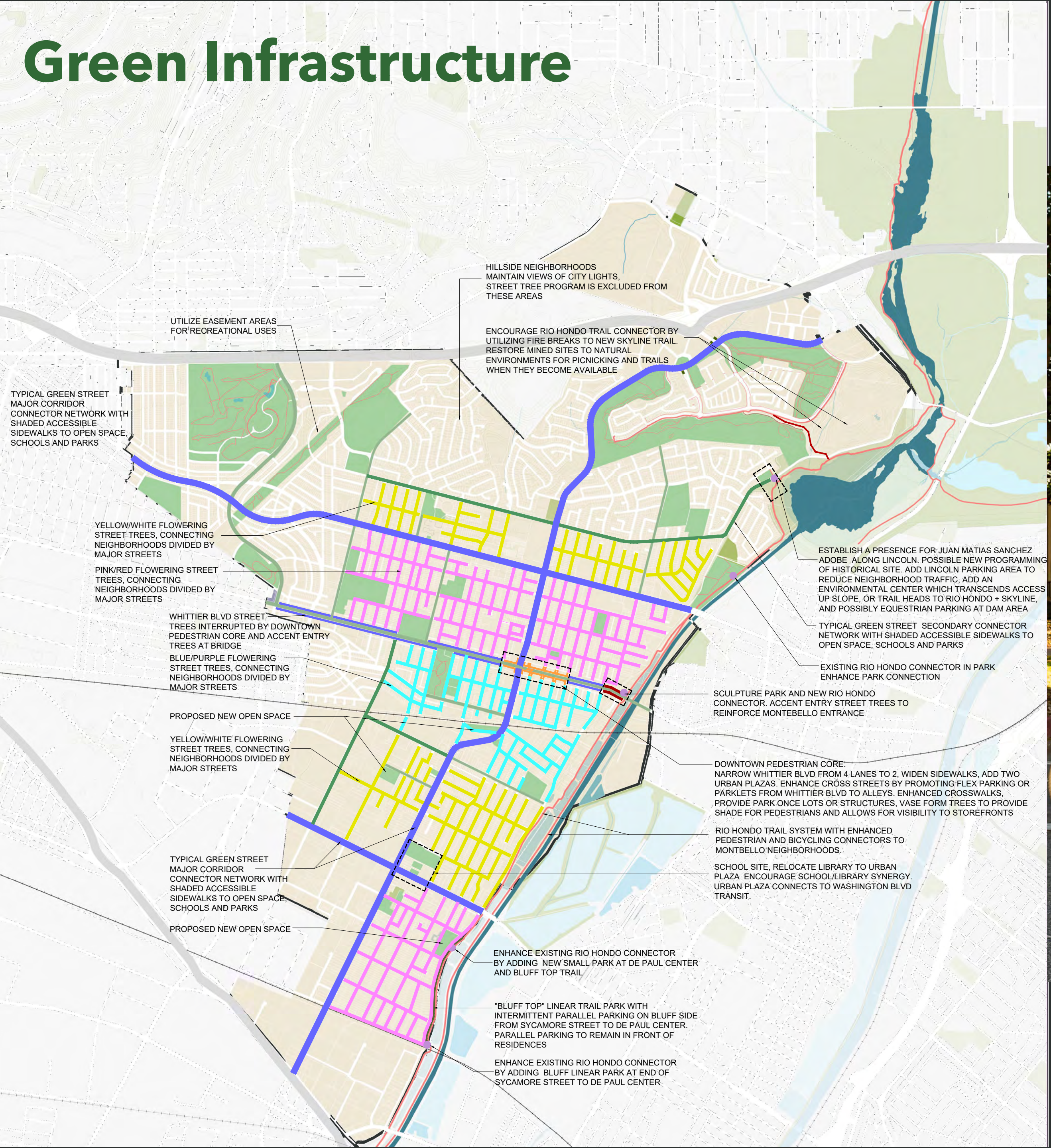


# Green Streets



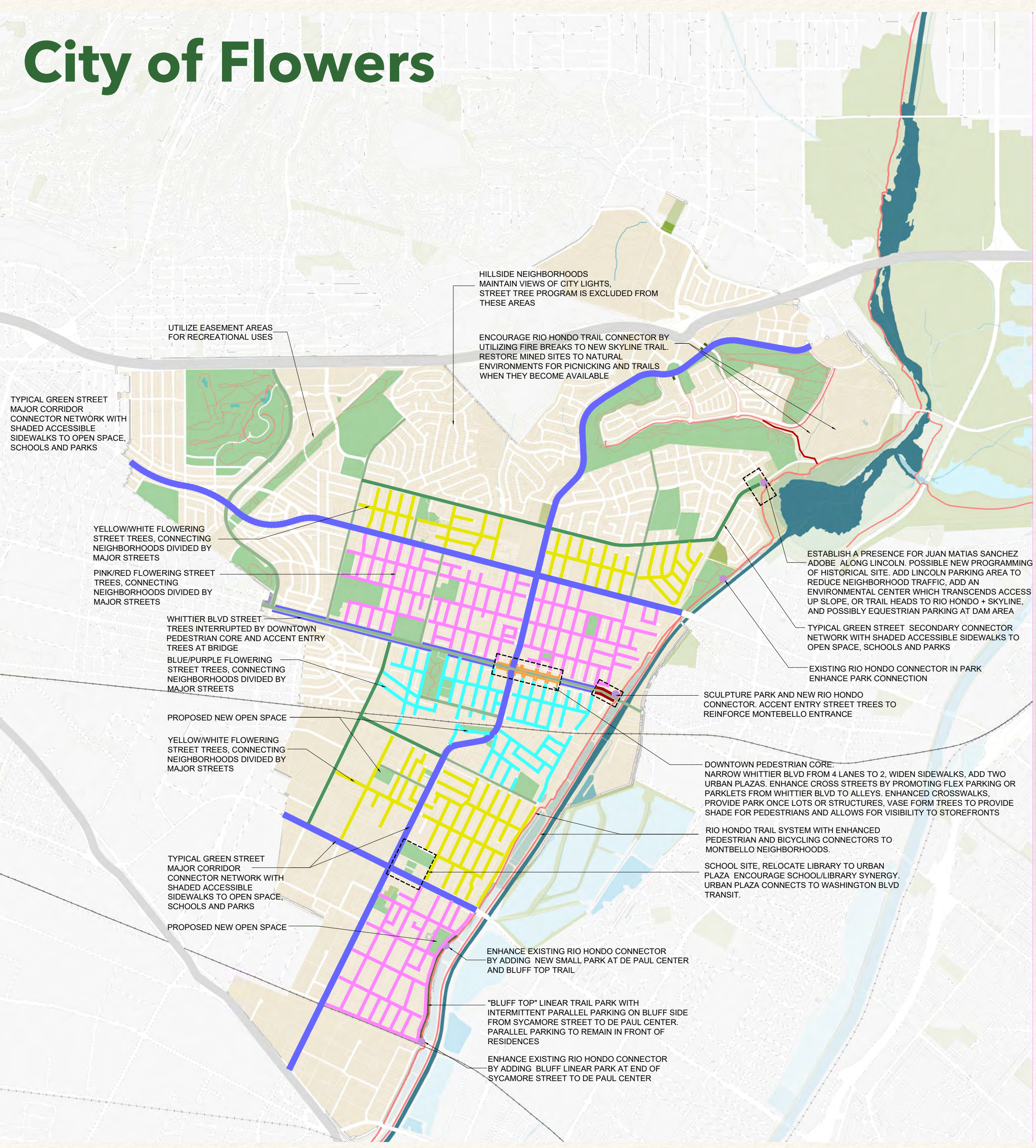


# Green Infrastructure

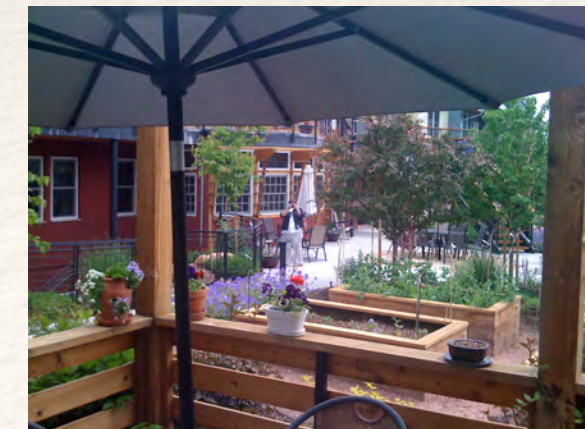
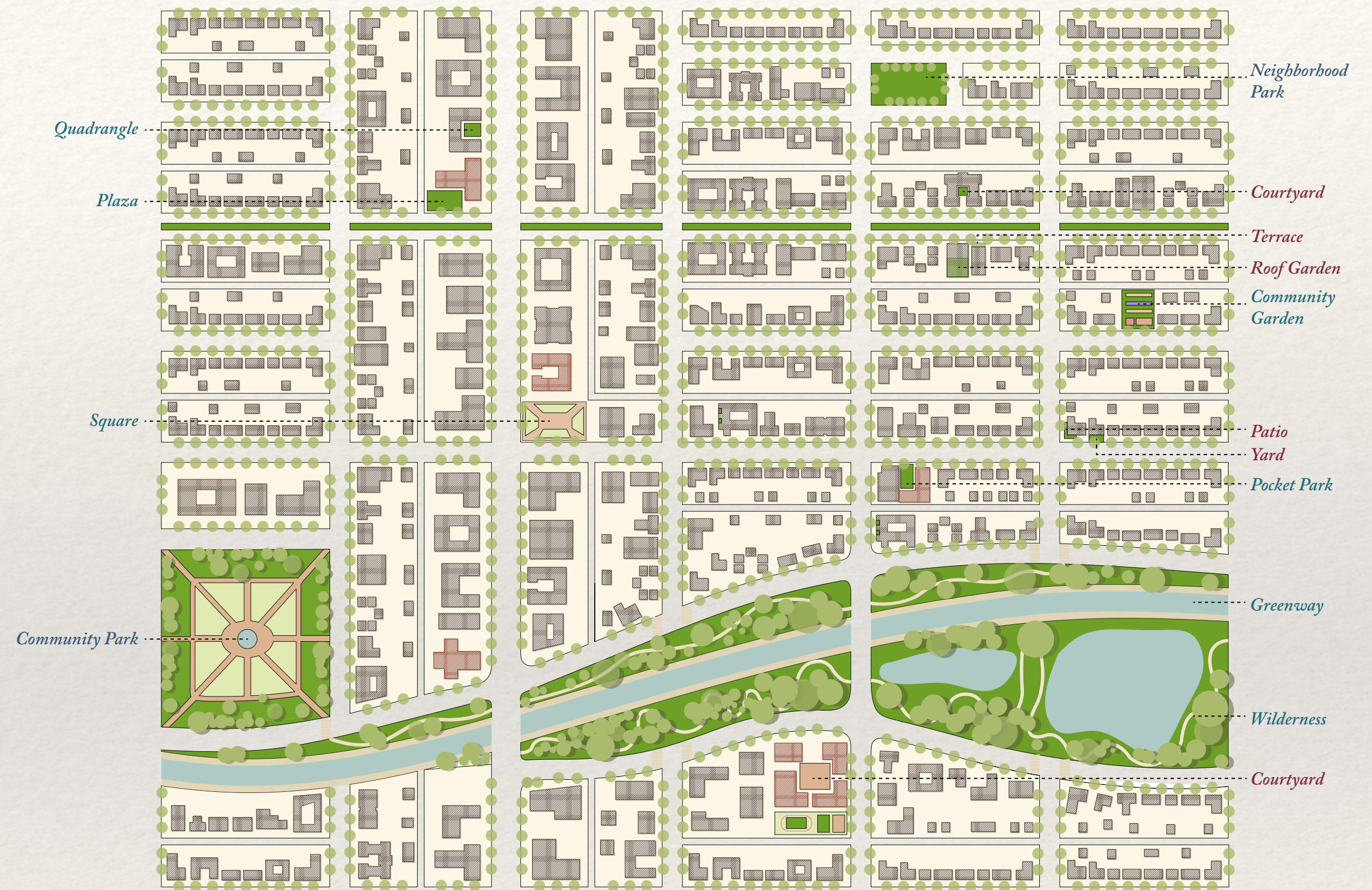
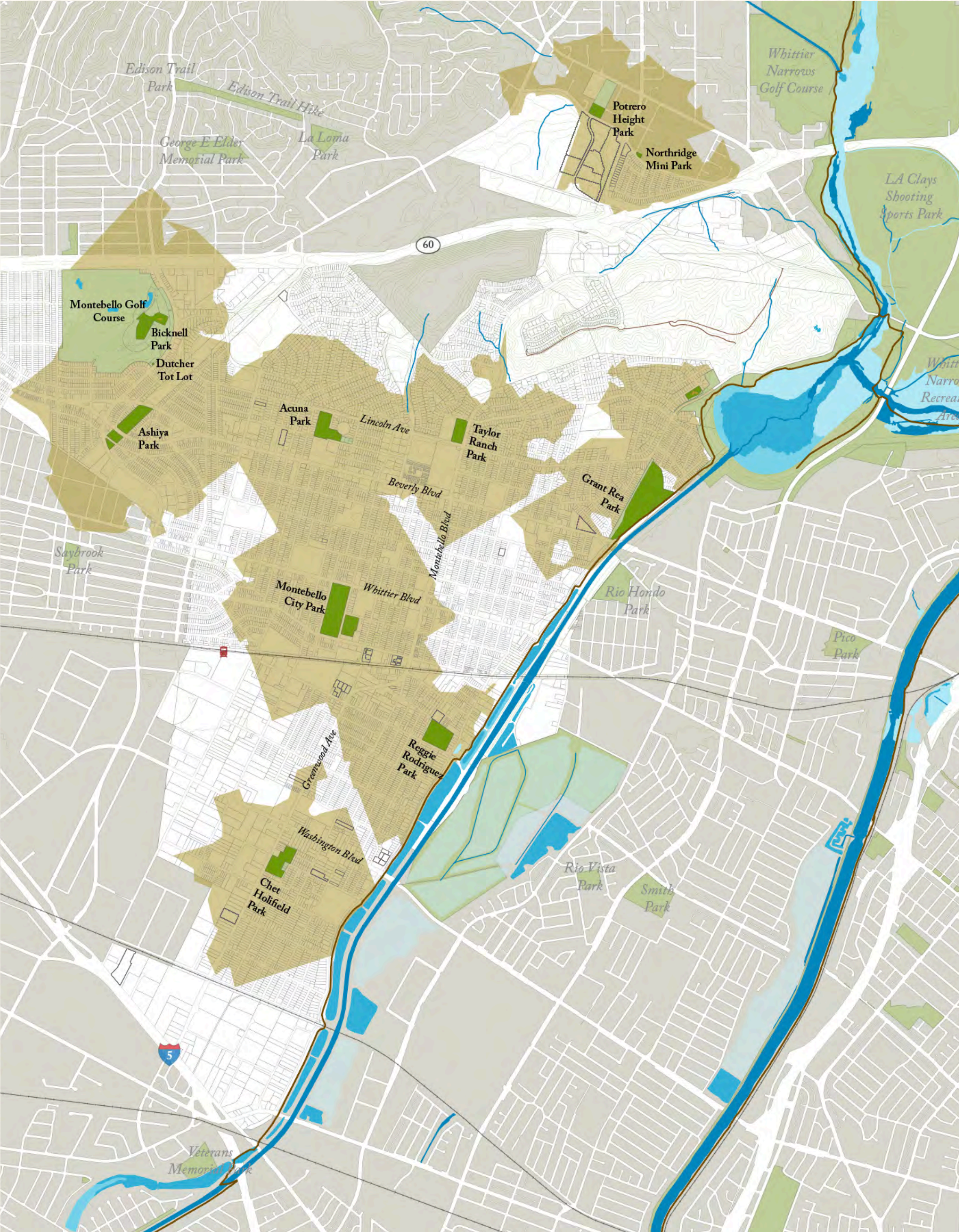




# City of Flowers















[www.planmontebello.com](http://www.planmontebello.com)

[generalplanupdate@cityofmontebello.com](mailto:generalplanupdate@cityofmontebello.com)